

WINTER  
2011

The Official Publication of the Water Environment Association of Utah



# DIGESTED news

*Celebrating 50 Years of Clean Water*

# WEAU <sup>2012</sup>

## ► Buyers' Guide

**INSIDE:**

Mid-year Conference Recap ■ Using Social Media for Business ■ PWO

WEAU - Central Valley Water Reclamation Facility  
800 W. Central Valley Road  
Salt Lake City, Utah 84119  
Address service requested

# Global Technologies, Local Solutions.



Degremont Technologies offers trusted, globally proven solutions for your water treatment challenges.



[www.degremont-technologies.com](http://www.degremont-technologies.com)

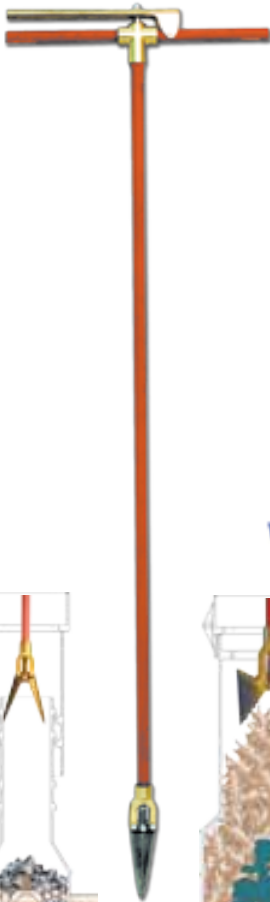
HEADWORKS | BIOLOGICAL | SEPARATIONS | MEMBRANES | OXIDATION DISINFECTION | BIOSOLIDS | INDUSTRIAL SYSTEMS

## INFILCO

**Represented by W-Cubed, Inc.**  
2121 S. West Temple, Salt Lake City, UT 84115  
Phone: (801) 466-3819

# Pollardwater.com

QUALITY TOOLS FOR WINTER



Winter Clothing



Plastic and Copper Shut-Off



Valve & Basin Cleaners



Food Grade Lubricant



Leak Detectors



Locator for Buried Hydrants



Hydrant Steam Thawer



Hydrant Flags

**Phone 800-437-1146**  
**Find it all at [www.pollardwater.com](http://www.pollardwater.com)**



## MEASURE



At Master Meter, we're creating the future of water management. Our Octave™ ultrasonic meter uses the Sound of Science™ to accurately record every drop

of this precious resource. Highly flexible and innovative, *Master Meter is defining the Science of Precise Measurement to make every drop of North America's water measure up.*

iPad Giveaway • ENTER TO WIN! • No Purchase Necessary  
Only one entry per person • [www.mastermeterpromo.com](http://www.mastermeterpromo.com)

Promo Code: UDNW12



Please contact Jared Rice • Master Meter Product Specialist  
HD Supply • 801.628.7970 • [Jared.Rice@hdsupply.com](mailto:Jared.Rice@hdsupply.com)

# Solutions Without Boundaries

## For your wastewater needs

Consulting • Project Financing • Planning • Engineering • Construction • Construction Management-Operate



215 S. STATE STREET, SUITE 1000  
SALT LAKE CITY, UTAH 84111  
801.350.5200

[www.ch2mhill.com](http://www.ch2mhill.com)

**WEAU**  
BOARD OF DIRECTORS  
2011-2012

**President**  
Dan Olson

dano@tooelectricity.org

**Past President**

Jill Houston  
jillb@cdsewer.org

**President Elect**

Paul Krauth  
pkrauth@utab.gov

**Vice President**

Dru Whitlock  
drury.ubitlock@cb2m.com

**Director**

Matt Myers  
mmyers@sdsd.us

**Director**

Michael Foerster  
mikef@svsewer.com

**Director**

Phil Heck  
pheck@bruncald.com

**Director**

Jeff Wiest  
jeff.waterford@gmail.com

**Secretary/Treasurer**

Clint Rogers  
crogers@carollo.com

**Federation Director**

Kevin Cowan  
kcowan@ndsd.org

**Outgoing Federation Director**

Reed Fisher  
fisberr@cvurf.org

**Incoming Federation Director**

Lance Wood

**PWO Representative**

Gary Hill  
gbill@sbwr.org

**PWO Representative Elect**

Ron Clements  
ronclements@ndsd.org

**Editor**

Chad Burrell  
cuburrell@orem.org



Published by:



On behalf of the WEAU

Tel: 866-985-9780

Fax: 866-985-9799

www.kelman.ca

Managing Editor, Scott Kelman  
Design/Layout, Theresa Kurjewicz  
Advertising Sales, Chad Morrison  
Advertising Co-ordinator,  
Lauren Campbell



FEATURES

2011 Mid-year Conference recap ..... 8  
Using Social Media for Business ..... 16  
2012 WEAU Buyers' Guide ..... 19

Departments

President's Message ..... 6 News & Notes ..... 28  
Collections ..... 8 Students ..... 36  
PWO ..... 13 Ad Index ..... 38

Message from the editor: Ingenuity comes from the bottom up

I would like to start by thanking Sharon Burton for the wonderful things she has done with the *Digested News*. I would also like to thank our publishers at Craig Kelman & Associates for doing such a great job putting everything together for us. I hope to be able to carry on with this great legacy during my time as editor. One of the main highlights in this issue is the WEAU Mid-year Conference held at the Cultural Celebration Center in West Valley. It was a great conference and I hope you enjoy what we have put together. The Cultural Celebration Center houses many unique pieces of art work and among these is my favorite painting, Arnold Friberg's 'The Prayer at Valley Forge.' This painting always brings to my mind that it requires great individuals, sacrifice, faith, and commitment long before you can ever have a great government. I believe George Washington exemplified these

traits in his personal life long before he became President of the United States. The organizations we work with are no different. Government, with all its regulations and laws or any other organization for that matter will never have the power to make us great or solve all our problems. We are the ones that have in our control the ability to make our organizations, our industry, and our government great through being great individuals. Whether you are a manufacturer, engineer, consultant, or operator your individual efforts in this industry are greatly valued. In many cases direction comes from the top down, but ingenuity comes from the bottom up. Thanks to all you individuals that do your part to make our industry great!



**Chad Burrell**, *Digested News* Editor



Dan Olson

## Life's most precious substance

Recently, a friend and I had a discussion about how many things in life these days seem opposite of what they really should be. Society values things that have no worth and sets at naught the most precious things in life. With the Mid-year Conference fresh on our minds, Thanksgiving a recent memory and the Christmas season upon us, I have been reflecting on what is life's most precious substance. If we listen to what society is telling us it would be something tangible, a material thing. Society as a whole is seldom

right. We must search our own hearts for that part of our lives that we value most. Certainly, the most valuable thing in my life is my family, my wife and three kids. They are followed closely by some very dear friends and then my faith. Right behind those things are my friendships I have built while working in the water industry over the last 20 years. Our industry is filled with good, hard working honest folk that my father would call 'the salt of the earth.'

So, as we begin a new year remember those things that are most important to

you. Spend time with family and friends. But also build your relationships with others in the field. Attend the conferences, workshops and participate in the training. Get involved with one of the many committees of the association. Attend the fun nights, BBQ's and if you have the chance, join in the operator's challenge. The relationships you build will be of great worth and will last your lifetime. [DN](#)

“ We must search our own hearts for that part of our lives that we value most.”

**SPECTRASHIELD**  
LINER SYSTEMS  
**MANHOLE & WETWELL RESTORATION**



**Prevents Corrosion & Stops Infiltration**  
**Stress Skin Panel Adds Structural Strength**  
**Restores Structure Walls to Original Levels**  
**Cost Competitive**  
**10-YEAR WARRANTY**  
**A 7' DEEP MANHOLE CAN BE LINED IN**  
**LESS THAN 1 HOUR**  
**SpectraShield® Liner System**  
[www.spectrashield.com](http://www.spectrashield.com)

**SUNRISE**  
ENGINEERING

**Planning, Design and Construction Services**  
for Utah Counties & Sewer Districts

- Collection
- Treatment
- Rate Studies
- Feasibility Studies
- Modeling
- Reuse Applications
- Bidding
- Construction Administration
- Master Planning
- Funding Acquisition

*Great Ideas,  
Proven Results*

Utah Offices  
Salt Lake City • Ogden  
Smithfield • Fillmore • Richfield  
Washington • Cedar City

[sunrise-eng.com](http://sunrise-eng.com)



# LARGE-SCALE DISINFECTION

The new TrojanUVSigna™. It's ideal for those municipalities wanting to upgrade their wastewater disinfection system or convert from chlorine. The system provides high UV output, high electrical efficiency and the lowest lamp count (thanks to TrojanUV Solo Lamp™ Technology). It's also easy to operate and maintain. Quartz sleeves are automatically cleaned with ActiClean™. Lamp replacements are simple. And if you need to lift a bank from the channel, just activate the Automatic Raising Mechanism.

Energy efficiency, fewer lamps and worry-free maintenance. That's UV innovation. That's TrojanUVSigna™.

Learn more at [trojanuv.com/signa](http://trojanuv.com/signa).

TROJANUV



# WEAU 2011 MID-YEAR CONFERENCE SETS ANOTHER ATTENDANCE RECORD

by Jim Schwing, P.E., CH2M HILL

## THE BAR HAS BEEN RAISED -

The Mid-year Conference Committee has its work cut out for them to match this year's conference in 2012. The 2011 Mid-year Conference attendance was approximately 200. The numbers are still being counted, but early indications are that attendance set another record. This will be the third year in a row that the conference attendance has increased. Just three years ago the attendance was around 150, so the 2011 attendance increased by approximately 33% in just three years. Why the popularity of this conference? Obviously, the great program is a big reason, but other reasons are likely the centralized location and the one-day duration. Attendees came from as far away as Logan and the Orem/Provo area. The fact that attendees can attend so many quality presentations all packed into one day is also a major draw.

There were 29 quality technical presentations covering areas of water quality, wastewater collection and treatment, and biosolids management. The program roughly included four tracks; Water Quality, Facility Operations, Wastewater and Biosolids, and Nutrients. Four of the presentations were focused on Operations including Math, Facility Management, and Laboratory Operation. The highlight of the water quality sessions was a Total Maximum

Daily Load (TMDL) panel discussion of planning and policy issues in Utah. The panel included local experts from UDWQ, POTWs, and consultants.

The luncheon was packed full of recognitions of students and operators for their accomplished and culminated with a Keynote Address by Leah Ann Lamb, Assistant Director of the Utah Division of Water Quality. Student recognitions included the Midyear Conference Poster Contest winner, Andrew Hobson, USU Graduate Student who won \$500. National WEF 2<sup>nd</sup> place Student Design Competition winners from Utah State University included Camilla Snow, Diana Pribble and Riley Bradshaw. The USU Team Faculty Advisor was Dr. Ryan Dupont. They won a \$1,500 cash prize from WEF. The WEAU Robert J. Okey Scholarship Graduate and Undergraduate winners were Jeongdong Choi of the University of Utah and Camilla Snow of Utah State University, respectively. Each won \$1,500 scholarships.

The Wasatch All Stars were recognized for taking 3<sup>rd</sup> Place in the WEF maintenance event at WEFTEC. This team included Lane Reynolds/North Davis Sewer District, Shawn Wilson/Central Weber Sewer Improvement District, Weston Gardner/South Valley Water Reclamation Facility, Nick Brown/Snyderville Basin Water Reclamation District and John

Lewis/Cottonwood Sewer Improvement District. And finally, the Central Valley Wasted Gas team was honored for taking 2<sup>nd</sup> place in the WEFTEC Maintenance event and 3<sup>rd</sup> place overall out of 26 teams, and placed 10<sup>th</sup> or better in all five events. The CVWRF Wasted Gassers included Kevin Gallagher, Darrin Morris, Jared O'Brien, Jeff Weiss, and Tiffini Adams.

The Mid-year Conference Committee members responsible for the ongoing success of this conference include Tom Holstrom/CVWRF, Facilities; Trevor Lindley/JUB, Technical Programs Lead; Ron Roberts/CVWRF; Gary Hill/SBWRD, Operator Program; Technical Programs Support; Patty Eagler/MWH, Promotions; Tania Datta/CH2M HILL, Registration; Christina Osborn, Young Professional; Tiffini Adams/CVWRF, Young Professionals Support, and Jim Schwing/CH2M HILL, Chairman.

WEAU recognizes our sponsors: Platinum - Bowen Collins & Associates, Brown and Caldwell, CH2M HILL, and MWH; Gold - JUB Engineers and Coombs-Hopkins; and Silver - Thatcher Company. Their support allows WEAU to provide quality technical programs and training opportunities, and to attract younger members and support from local colleges and universities. [bn](#)

## E&M Services - SCADASystem4U

[eandmweb@gmail.com](mailto:eandmweb@gmail.com)

[www.scadasystem4u.com](http://www.scadasystem4u.com)

### Systems to fit your budget and needs!

**Are you continually signing Change Orders due to poor system design?**

***We use the latest technology in our systems and recommend what we've used and know it will work!***

***Many systems are designed by individuals that have no 'hands on' experience, and they recommend what a vendor tells them is the 'latest and greatest'.***

***We will lower your installation costs by doing it right the first time, we'll work with your people to lower cost with our line of DIY equipment.***

**Find out what you're missing! Call 435-559-0759**

## 2011 WEAU Mid-year Conference Scholarship Winners (Okey Award)

- Undergraduate Level Scholarship:
  - Camilla Snow \$1500
- Graduate Level Scholarship:
  - Jeongdong Choi \$1500 [bn](#)



## 2011's Keynote Speaker was Leah Ann Lamb, Division of Water Quality

Leah Ann Lamb is Assistant Director of the Utah Division of Water Quality (DWQ). She returned to the division in March 2008 after serving for 12 years as the Director of the Department of Environmental Quality's (DEQ) Office of Planning and Public Affairs. In her current position, Leah Ann oversees the Groundwater Protection, Water Quality Management, Engineering and Monitoring functions of the division. She also serves on EPA's National Advisory Council for Environmental Policy and Technology and the Exchange Network Leadership Council.

Leah Ann has over 28 years of experience in environmental policy,

planning and program implementation having also served as a Wetland Biologist for the U.S. Army Corps of Engineers, Water Quality Director for the Southeastern Utah Association of Local Governments and an Environmental Scientist for the Utah Division of Water Quality. She also represented Utah in national environmental policy forums by serving in leadership positions with the Environmental Council of the States, the Forum on State and Tribal Toxic Action, and the National Pollution Prevention and Toxics Advisory Council. Leah Ann has a B.S. in Natural Resources and M.S. in Water Resources Management. [DQ](#)



**ABOVE**  
WET WELL MOUNTED PUMP STATIONS  
**ALL OTHERS™**

**OPERATOR SAFE**  
Eliminates Confined Space Requirements & Costs

**Above-Grade Pumping.  
Above All Others™.**

Smith & Loveless Wet Well Mounted Pump Stations revolutionize the way you think about wastewater lift stations. By mounting long-lasting and efficient Non-Clog S&L Pumps, piping, valves and controls completely above the wet well, wastewater pumping becomes dramatically safer and more economical with efficiencies above all others.

**Contact Us for 50% Savings Over Submersibles.  
Local Utah Representative:**

**Waterford Systems**  
(801) 463-9900 • [waterfordsystems.com](http://waterfordsystems.com)  
[waterfordsystems@gmail.com](mailto:waterfordsystems@gmail.com)

**Smith & Loveless Inc.**

(800) 898-9122 | [smithandloveless.com](mailto:smithandloveless.com) | [facebook.com/smithandloveless](https://www.facebook.com/smithandloveless)

**Collections Quiz**

from *Sewergeek.com* Quiz submitted by Lon Rasmussen Cottonwood Improvement District

- In a class A tractor with a trailer traveling at 35 mph, how far will you need to come to a complete stop?  
a) 123 feet                      b) 222 feet  
c) 310 feet                      d) 286 feet
- What is the minimum tread depth of the rear tires on a vehicle weighing more than 26,000 pounds?  
a) 4/32                              b) 7/32  
c) 2/32                              d) 5/32
- At what approximate air pressure on a brake system should the parking brake valve pop-out?  
a) 50 psi                            b) 60 psi  
c) 45 psi                            d) 40 psi
- When checking the brake system, with the brakes released, what is the maximum measurement the slack adjuster can move?  
a) 2 inches                        b) 1 inch  
c) 1 ½ inches                      d) ½ inch
- What are the three items that are considered to be emergency equipment that should be on your truck?  
a) Electrical fuses, three red reflective triangles, and a properly charged and rated fire extinguisher  
b) Electrical fuses, three red reflective cones, and a flare  
c) Spare tire, three reflective triangles, and a properly working radio  
d) Electrical fuses, three road flares, and a proper set of tire chains
- What is the most important reason for doing a vehicle inspection?  
a) To make sure you have enough fuel for the trip  
b) So repairs can be written up  
c) To make sure your lights all work so the little cars on the road can see you, because you will be surprised just how many of them had no idea you were there  
d) Safety for yourself and for the other road users

**Answers:**

1- B 222'. You will first travel 91' when you recognize the problem, then an additional 39' for your reaction distance and finally 92' for the brakes to bring the truck to a stop. 2- C. The minimum is 2/32, 3- D. The parking brake valves should pop out approximately at 40 psi, 4- B. The maximum is no more than one inch when pulled by hand, 5- A. Spare electrical fuses, three red reflective triangles, and properly charged and rated fire extinguisher, 6- D. Safety for yourself and for the other road users.

# BEST. INSERTION VALVE. EVER.

The EZ<sub>2</sub><sup>™</sup>: Faster, More Complete, Better in Every Way.



## EZ<sub>2</sub> Big Advantages:

**Fast Install** - (1 hour or less for 4" – 12"; about 4 hours for larger valves)

**One Cutting Tool** - We mill a 1-5/8", 120° slot across the top of **any sized pipe**. Other systems require bulky equipment and a different bit for each size pipe.

**Host Pipe Integrity** - Single slot installation means minimal impact on pipe integrity. Other products weaken pipe by cutting out an entire section.

**Removable Bonnet** - Our built-in isolation valve allows easy removal of the valve bonnet with just a wrench.

**The EZ<sub>2</sub> Advantage** - Our expandable Resilient Wedge Gate delivers a closure even with *Tuberculated pipe*.

**All Pipe Types** - Works with perfect or irregular IDs, and all standard & many non-standard materials.

**Simply The Best** - The EZ<sub>2</sub> is the easiest & fastest valve to install making it our best insertion valve system on the market today.

**Sizes: 4" through 24" plus A/C pipe**

## EZ<sub>2</sub> Creates Solutions. Other Systems Can Create Problems.

A recessed design can create a debris collecting flaw in the valve seat.

Accumulated materials have stopped full closure of valve.

EZ<sub>2</sub> avoids this problem by seating directly on the host pipe surface creating a drip-tight closure even in tuberculated systems.



Distributed in the U.S. and  
Canada exclusively by

**Mueller Co.**

800-423-1323

[www.muellercompany.com](http://www.muellercompany.com)



**Advanced Valve Technologies, Inc.**

**HQ:** 800 Busse Road,  
Elk Grove Village, IL 60007

**Plant 2:** 12601 Homan Ave.,  
Blue Island, IL 60406

**877.489.4909**

[www.avtfittings.com](http://www.avtfittings.com)

ORCHESTRATING SOLUTIONS TO  
**COMPLEX WATER CHALLENGES...**



TAKES JUST THE  
**RIGHT TOUCH.**

**Serving Our  
Clients in Utah**

**carollo**  
Engineers...Working Wonders With Water®

801.233.2500 | carollo.com



BUILDING A BETTER WORLD

Water / Wastewater Treatment -  
Conveyance / Storage -  
Water Quality / Watershed Management -  
Groundwater Development -  
Program Management -  
Construction Management -

**Act Globally  
Think Locally**

10619 South Jordan Gateway, Suite 100 | Salt Lake City, UT 84095  
801.617.3200 | www.mwhglobal.com



AfterMarket Hotlines:  
800-964-9733

Representing Quality Equipment  
for the Treatment of Water and Wastewater

www.coombshopkins.com



**AQUARIUS**  
TECHNOLOGIES, INC.

Ashbrook  
*Simon-Hartley*

**BIOREM**

**CBI WALKER**

**CONSERVATEK**



Descriptive  
Technologies  
Corporation

**OVIVO**  
Bringing water to life

**Hydro**  
International  
ALTRIX SYSTEMS

**Fontaine**



**HSI**

ITT  
**LEOPOLD**

**Parkson**

*Hoyle*  
CORPORATION

**RODNEY HUNT**

Sartorius  
ITT Industries

**SIN**  
SIN GROUP

**SolarBee**

**Therma-Filte**



**TONKA**

**TROJAN UV**

**VULCAN**  
INDUSTRIES, INC.

**CARLSBAD OFFICE**  
5411 Avenida Encinas  
Suite 250  
Carlsbad, CA 92008  
Tel: (760) 931-0555  
Fax: (760) 931-9115

**WALNUT CREEK OFFICE**  
2855 Mitchell Drive  
Suite 215  
Walnut Creek, CA 94598  
Tel: (925) 947-6733  
Fax: (925) 947-6784

**PHOENIX OFFICE**  
668 North 44th Street  
Suite 251  
Phoenix, AZ 85008  
Tel: (602) 275-4303  
Fax: (602) 275-4229

**SALT LAKE CITY OFFICE**  
2825 East Cottonwood Parkway  
Suite 500  
Salt Lake City, UT 84121  
Tel: (801) 990-3174  
Fax: (801) 990-3247

# What it takes

By Gary Hill

**W**ell, the season of cold temps, snow and the associated aches and pains from clearing it, and getting everything winterized is upon us. That means getting the wood cut and stacked, garden tilled, mower deck off tractor and replaced with plow blade and chains put on, snow tires installed on the car and anti freeze checked, get all the harvested produce into the cellar, check the furnace and replace the filter, and clean the chimney and wood stove... And I have not even begun to work on the 'honey-do's.' So I have snuck out to the garage to regroup and relax...sort of.

You know, working on this old Pontiac has given me a perspective on just what it took to put together one of these fine automotive wonders. I do not know how much robotics they had back in 1964, but I am sure many hands had a hand in assembling this car. I assume it started off as a bare frame, which had to be assembled, then the body and associated bushings. The motor, which had to be assembled from a bare block, and all the options, which may have been added to satisfy the customer had to be installed along with the transmission, driveline, and rear end. Brake assemblies, lines, master cylinder and assorted connectors, the gas tank and lines, everything under the hood from AC options to the radiator and hoses to wiring, and everything connecting the driveline to framework had to be added.

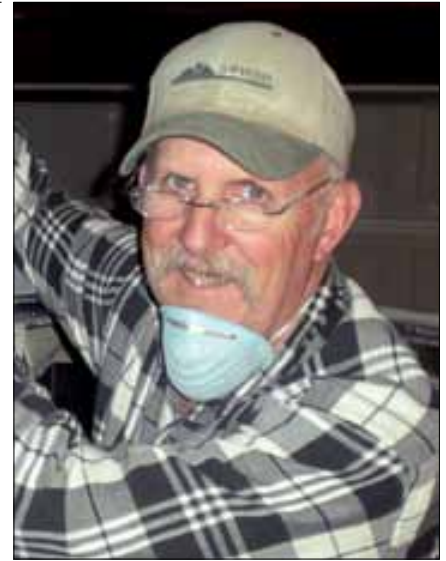
The suspension and steering components, fender wells and fenders, grillwork and bumpers, lights, hoods and deck lids, emblems, mirrors, antennas, glasswork and all the associated regulators, weather-stripping, guides, cranks and

handles and I have not started on the interior.

The floor and trunk floors had to be welded in, doors added, inner panels and headliner, bucket seats and rear bench seat, everything on and under the dash; wiring, ductwork, heater and more AC components, gauges, carpet kits, consoles, armrests, emblems and trim work, glove box and ashtrays. All this and much more to build a car and many cars were built to customer specs and options ordered, such as paint schemes, interior colors, motor sizes and carburetor options, manual or automatic transmissions and rear end ratios to name a few. In the end, everything had to work before it was shipped. I have in no means covered it all, but you get the idea. Once again I'm sure you're asking what this has to do with my workplace.

Well, I have realized how many people it takes to make this industry run; from the collection and treatment operators, laboratory personnel, administration people, pretreatment, to the assorted board members, lawyers, state and federal regulators and the list goes on. Even in the WEAU, I am amazed at how many volunteer, or are volunteered, that put in many, many hours above and beyond the regular work week to make the trainings, seminars, conferences, Operator Challenge and committees work.

I have gained a new appreciation for all the hard work that goes in to make this industry and the WEAU what it is. It is nothing short of amazing how it all comes together. I want to say 'Thanks' to all of you for making this work, day in and day out, year in and year out.



As this year comes to a close, I would also like to recognize the National challenge teams, Wasted Gas and Wasatch Allstars, for representing Utah in Los Angeles. Way to go guys and gal. Hope you had fun. By the way, we will be gearing up for the Utah challenge event in St. George in April, so let's be thinking about getting teams together for this fun and competitive event. Even those plants that cannot send a full team but could spare an operator or two, we can put together composite teams. Let us make this event bigger and better than ever.

May y'all have a great holiday season and here's looking forward to a happy New Year!

Happy Holidays from my ol' garage [DH](#)



**J-U-B ENGINEERS, INC.**



**THE LANGDON GROUP**  
a J-U-B Company



**GATEWAY MAPPING INC.**  
a J-U-B Company

OTHER J-U-B COMPANIES

## Improving quality of life for our communities

Treatment Design | Nutrient Removal/TMDLs | Lagoon Improvements | Water Reuse | Optimization  
Civil Engineering | Surveying | Planning | GIS | Public Involvement

801.547.0393 | Salt Lake • Kaysville • Orem • Logan | [www.jub.com](http://www.jub.com)

# WEFTEC 2011 ~ Operations Challenge

By Tiffini Adams

**F**or the past several months, the Wasatch All Stars and Central Valley Wasted Gas have been practicing for Nationals – the elusive WEFTEC Operations Challenge down in Los Angeles. There has been a friendly competition between the two teams, sharing the times of how they are doing in practice, hiding the times of how they are doing practice, sharing tips and tricks, hiding tips and tricks. When they

finally got down to Los Angeles, the friendly rivalry turned to encouragement and support. They were amongst 26 teams from around the country and seeing each others familiar faces was a welcome connection among a sea of unfamiliar faces.

The first event Monday morning was the written Process Control test. All twenty-six Division II teams and the five Division I teams came together in one big

room to take the test. This was the first time all of the teams were together, seeing the creative uniforms, asking how far folks had travelled, was this your first time at WEFTEC, do you have your pencil and calculator, etc. It was an impressive and intimidating assembly. Twenty-five minutes later, the test was over and the fun could begin.

Next they went into the unending showroom of the convention floor. There were booths with vendors and freebies as far as the eye could see. The Ops Challenge events were set up at one end of the exhibit hall. There were three stations for each of the four events: two stations for Division II and one station for Division I.

The Laboratory Event was held Monday afternoon. Tensions and humor were high as both teams discovered how different the event was set up compared the way they had been practicing at home. Wasted Gas was one of the first teams to run their event. The All Stars watched closely hoping to learn from Central Valley's mistakes. Wasted Gas came away frustrated and a little stunned with their first physical event. A little later, the All Stars were up and Wasted Gas watched nervously from the sidelines. It is just as nerve wracking watching your friends in the event as it is when you are in the event. You watch your counterpart doing your part in the event and you hope, hope, hope that they do well. Both teams were relieved when the first day of events were under their belts, while anxious and excited for the events of day number two.

One of the highly anticipated events is the Collections Event where the team members simulate repairing a broken pipe. The saws and speed wrenches fly at lightning speed. The teams compete at varying times over the course of the day so you may or may not see your other teams competing. As it turned out, the All Stars and Wasted Gas were scheduled to be side-by-side running their events at the same time. The event usually finishes in less than two minutes so you cannot blink or you will miss it. The three minute set up was staggered just enough that they could actually watch each other run the event,



Central Valley Wasted Gas: (in no particular order) Tiffini Adams, Kevin Gallagher, Darrin Morris, Jared O'Brien, Jeff Weiss (Coach)



**VAL KOTTER**  
OWNER

PHONE  
(435) 734-9598

MOBILE  
(435) 720-0237

FAX  
(435) 734-9870

**Sewer Cleaning (6"-24") - Cleaning (24" & Up) No Bypass Pumping Required**  
**Specialized Equipment • TV Inspection • Leak Sealing (8"-36") Manhole Leak Repair**  
**Link Pipe Spot Repair • Ultraliner (PVC Alloy Pipeliner 6" - 30")**  
**• Trolining (36" - 120")**  
**• Permacast MH Lining (w/Con<sup>SM</sup>Shield) • Backhoe Work • Dump Truck**

**1035 WEST FOREST, BRIGHAM CITY, UTAH 84302**  
 Website: [www.valkotterandsons.com](http://www.valkotterandsons.com) • Email: [pearl@valkotterandsons.com](mailto:pearl@valkotterandsons.com)

14

[BACK TO TABLE OF CONTENTS](#)

Digested News Winter 2011

shouting “Breathe” to the pipe-cutters so they would not pass out. The two teams’ final times were within seconds of each other.

Safety was next for Wasted Gas and several hours later for the All Stars. Not either teams strongest events, so we will leave it at that.

That brings us to the climax event – the Pump Maintenance Event. Wasted Gas was up first. Nerves were high, adrenaline was flowing. Things went fairly smooth. While they were catching their breath, the All Stars moved into place right next to them again. The judges were kind enough to say that Wasted Gas could linger in the event area a little longer to watch our other team. The All Stars did a great job. Both teams finished within seconds of each other, again.

With the events behind them, there was the waiting and wondering as to how the teams had done. At the WEAU Annual Conference in St. George, it is a game to guess and scheme as to where each of the five to seven teams will place in the events. At WEFTEC Nationals, it is impossible to figure out where the teams are going to place amongst 25 other teams. You only have your own raw time and you may or may not know if you had any penalties. Through out the day, the best raw times are updated for the events, but not with penalties either.

Fast forward now to the awards banquet that evening. Between the two teams, names were called three times. Wasatch All Stars – 3rd Place – Pump Maintenance Event. Central Valley Wasted Gas – 2nd Place – Pump Maintenance Event. Out of all of the events, both teams were surprised that the Pump Maintenance Event was the one they were taking home trophies for. Then came the Overall - best combined totals over the five events which is based on some crazy weighted calculations. Central Valley Wasted Gas – 3rd Place Overall. Who knew?!

Both teams congratulated each other on their awards, gave hugs and hand shakes all around. Then it was back to work and back to routine after months of practice. There were likely lots of razzing from co-workers like “Oh you still work here?” or “Nice of you to show up.” A big thank you to all of those that supported the teams! [Dix](#)



Wasatch All Stars: (in no particular order) Nick Brown ~ Snyderville Basin, Weston Gardner ~ South Valley Water Rec. Facility, John Lewis ~ Cottonwood Sewer Improvement District, Shawn Wilson ~ Central Weber SID, Lane Reynolds (Coach) ~ North Davis Sewer District





## Oldcastle Precast®

### Packaged Wastewater Treatment Systems

### AlgaePac™

Featuring  
**algaewheel**  
Technology

- Low Energy
- Low Maintenance
- Tertiary Treatment System
- Harnessing the Power of Algae

**Toll Free 888-965-3227**

[www.oldcastleprecast.com/wastewater](http://www.oldcastleprecast.com/wastewater)





# USING SOCIAL MEDIA FOR BUSINESS

BY CHERYL PARIEN

**S**ocial media such as Facebook, LinkedIn, Twitter, YouTube, blogging, and texting are not just for keeping up with friends and updating social calendars. If your business is not online and taking advantage of social media, you could be missing a great and cost-effective opportunity to market your products and services.

Using social media for your business is all about expanding your brand and connecting with customers and other stakeholders. It does not replace standard marketing and promotion, but complements it. Because social media is growing, businesses which ignore it risk being left behind.

## WHAT IS SOCIAL MEDIA?

Use of social media for both personal and professional purposes is on the rise. Here is a quick summary of some of the most popular:

**FACEBOOK (WWW.FACEBOOK.COM):** This is a social media site which began as a Harvard student networking tool, and has grown to include more than 400 million users worldwide. It is the most popular social network. Users can create

profile pages, post links, photos, join groups, play games, and update their pages as often as they wish.

## TWITTER (WWW.TWITTER.COM):

Twitter is a social networking and microblogging service allowing users to send and read other user messages called tweets. Tweets are text-based posts of up to 140 characters displayed on the author's profile page. Tweets are publicly visible by default, however, senders can restrict their tweets to friends only. Users may subscribe to other author tweets (known as following) and subscribers are known as followers. Twitter is growing fast, and currently has more than 100 million subscribers.

## LINKEDIN (WWW.LINKEDIN.COM):

This is the business-person's version of Facebook. It functions in a similar fashion, but is meant specifically for professional networking. It has more than 70 million registered users across 200 countries.

## YOUTUBE (WWW.YOUTUBE.COM):

This is a video sharing site where users can upload or view videos from around the world. It includes a wide variety of user-

generated video content, including movie clips, TV clips, and music videos, as well as amateur content such as video blogging and short original videos. Most of the content on YouTube has been uploaded by individuals, although media corporations and other organizations offer some of their material on the site.

**BLOGGING:** The term is short for Web log, and is a type of website or site portion. Blogs are usually maintained by an individual with regular entries of commentary, descriptions of events, or other material such as graphics or video. Many blogs provide commentary or news on a particular subject; others function as more personal online diaries. A typical blog combines text, images, and links to other blogs, websites, and other related media. The ability of readers to leave comments in an interactive format is an important part of many blogs.

**TEXTING:** Text messaging is the exchange of brief written messages between mobile devices over a network. It can include messages containing image, video, and sound. Texts can be used to interact with automated systems, such as ordering

products and services for mobile phones, or participating in contests. Advertisers and service providers use texts to notify mobile phone users about promotions, payment due dates and other notifications that can usually be sent by post, e-mail or voicemail.

## WHY USE SOCIAL MEDIA FOR BUSINESS?

Social media is popular with many different generations, but is especially so with young people. They are comfortable with the technology, grew up with it, and expect to use it. This group is your future clientele and employee pool. Companies which do not use these tools run the risk of being seen as behind the times, slow, and inefficient.

Even though these customer interactions are online, it does not mean they are impersonal. In fact, customized, targeted tweets or Facebook postings can be very personal. However, it is important not to overdo it, otherwise your carefully crafted message could get lost in the clutter.

“The power of social networking allows me to get my message out across numerous networks. I have the ability of communicating with my immediate peer group very efficiently,” says Angela Chambers, Practice Leader at Mercer Bradley, who regularly uses Facebook and LinkedIn to promote her business. “As well, this process gives me immediate access to people I have never met. The word gets out to individuals I normally would not have access to, creating additional contacts and business opportunities. I can reach thousands of potential buyers with just a few minutes of work.”

## ENHANCING YOUR BRAND

Dedicate time to creating your social media presence. Choose your profile and avatar images wisely. It is important to keep your online personality consistent. Use social media to reinforce your offline brand, not to create a new one. What you post online is archived and easily traceable, so maintaining your message is important.

However, it is important to be fresh also. Do not send out the same tweets over and over. Good writing is also important, especially with Twitter’s 140-character limit. If blogging on your website, take the time to craft pertinent posts, and proofread before posting. Grammar and spelling

mistakes look sloppy and could turn off potential clients. Snappy writing grabs attention and gives credibility.

In-Pipe Technology Company, Inc. has recently joined Twitter. “In-Pipe is very new to using Twitter (June 2010),” says Nikki Clay, Sales and Marketing Coordinator. “We are slowly integrating Twitter as a way to further awareness about wastewater industry news and trends as well as a supplement our own marketing program by maximizing exposure for items such as press releases, scheduled speaking engagements, awards, new white papers, and published articles.”

Social networking takes time to cultivate relationships and build sales contacts. Be sure to regularly care for your social network. Do not neglect it and use it only when you need something. Networking is a two-way street. Here are some tips:

- Begin your description with your special area of expertise
- Always include what you do for customers
- Include a bit of personal information such as hobbies, etc.
- Do not include information that is too personal unless it is relevant to your brand. Discussing an illness, fight with a spouse, or something similar is fine among friends, but not on a social networking site where it could be read

by potential clients and colleagues. Keep your posts light.

Social networking also has its place within your organization as well. It is a way for staff to keep up to date on company initiatives, and also to keep up with each other.

Take advantage of smart phones by creating free apps for iPhone and iPad which pertain to your business. Urge followers to subscribe to your company’s RSS news feed for automatic updates. This works both ways; you can also track references to your company through Google Alerts.

## UTILITIES

Utilities are a natural fit for social media, such as using Twitter to inform customers of outages, energy-efficiency programs, and general public relations. In the event of a service interruption, social media can help provide real-time updates for customers.

It makes sense for utilities to use social media, because their customers already are. If customers are unhappy with their service or rate increases, they will often turn to social media to voice their opinions and concerns. If your utility is already using social media to discuss policy and practices online, and joins the conversation rather than ignoring it, some negativity can be avoided before it begins. [DN](#)

The advertisement features a dark blue background with a light blue wave-like graphic at the top. The word "on" is written in a large, bold, green font. Below the logo, the text reads: "Whether we're providing a turnkey system to protect your most critical applications or thinking through an eminently effective solution to a unique challenge, you'll know the power will be on, guaranteed." Below this, it says: "Come to Kohler and tell us what you need. We'll bring it. On." Three pieces of equipment are shown: a generator, a transfer switch, and a switchgear. Below each is its name: "GENERATORS", "TRANSFER SWITCHES", and "SWITCHEGEAR". At the bottom left is the "EC POWER SYSTEMS" logo, and at the bottom right is the "KOHLER | on" logo with the website "KohlerPower.com". At the very bottom, the phone number "801-686-1424" and website "Web: ecpower.com" are listed.

# WATER SOLUTIONS SINCE 1974

- Water Resources
- Hydrology / Hydraulics
- Drinking Water
- Irrigation Water
- Waste Water / Water Reuse
- Storm Water / Flood Control
- Water Rights
- Water Conservation
- Water Quality
- Environmental Issues

**CORPORATE OFFICES**  
 6771 SOUTH 900 East  
 Midvale, Utah 84047  
 PHONE: (801) 966-6699

<b>BRIGHAM OFFICES</b>	<b>AMERICAN FORK</b>
102 West Forrest Street	1045 South 500 East, Suit 110
Brigham City, Utah 84334	American Fork, Utah 84003
PHONE: (435) 723-7034	PHONE: (801)216-8890

[www.hansenallenluce.com](http://www.hansenallenluce.com)

**HANSEN  
 ALLEN  
 & LUCE inc**  
 ENGINEERS



## GLOBAL EXPERTISE. LOCAL STRENGTH.

Effective management of our water resources is critical to the long-term health of the environment and our economic prosperity. Stantec delivers and manages water and wastewater infrastructure solutions with a focus on sustainability.

In Salt Lake City, call (801) 261-0090



One Team. Infinite Solutions.

A0-CAR/2011EB08/PV1



Photos courtesy of Stantec

Problems In Your Sewers? Too much I/I causing surcharging?  
 Broken pipe pieces blocking flow? Roots clogging the connection?  
 Too much grease stopping flow?

But you can't do anything because the problems come from private lateral lines?

Visit the Private Property Virtual Library (PPVL) to see what other utilities with successful private property programs are doing:

[www.wef.org/PrivateProperty](http://www.wef.org/PrivateProperty)

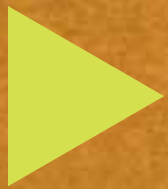
Read program summaries. Download examples. Get peer contact information.



Developed by the WEF Collection System Committee

# WEAU

2012



## Buyers' Guide

Welcome to our *Digested News Buyers' Guide*. On the following pages, you will find information that will help you meet your purchasing requirements throughout the year ahead. The initial three pages of this Guide list categories of products and services along with the various companies that can provide them to you. The remaining three pages provide an alphabetical listing of the companies as well as the contact information you will need to reach them. All companies listed in this Buyers' Guide are advertisers in this issue of *Digested News*.

**Company Listings  
Products & Services Source Guide**

## PRODUCTS & SERVICES SOURCE GUIDE

### Advanced Metering Infrastructure

Neptune Technology Group Inc.

### AMR/AMI/MDM

Master Meter, Inc.  
Neptune Technology Group Inc.

### Anaerobic Gas Safety Equipment

Shand & Jurs,  
an L&J Technologies Company

### Biogas Holders

WesTech Engineering Inc.

### Blowers/Instruments/Gas Detection

The Coombs-Hopkins Company

### Catch Basin Cleaning Equipment

Twin D Environmental Services

### Coatings, Lining & Corrosion Control

SpectraShield Liner Systems  
Val Kotter & Sons

### Compressed Air Systems

Wheeler Machinery Co.  
Computer Controls/Software

### Computer Controls/Software

E&M Services

### Condition Assessment

Black & Veatch Corporation

### Constructed Wetlands

CH2M Hill

### Contractors

EC Power Systems

### CSO & Stormwater Equipment

WesTech Engineering Inc.

### Dechlorination

Pollard Water

### Design-Build Services

Brown and Caldwell  
EC Power Systems  
E&M Services  
MWH Americas Inc.,

### Drilling/Dewatering/ By-Pass Pumping

BDP Industries, Inc.

### Education/Training Programs

Hansen, Allen & Luce

### Electrical, Instrumentation/ Controls/Generators

EC Power Systems  
E&M Services  
Pollard Water  
USEMCO  
Wheeler Machinery Co.

### Engineers/Consultants

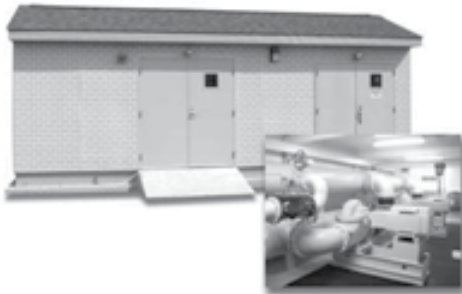
Black & Veatch Corporation  
Brown and Caldwell  
Carollo Engineers  
CH2M Hill  
EC Power Systems  
Forsgren Associates, Inc.  
Hansen, Allen & Luce  
J-U-B ENGINEERS, Inc.  
MWH Americas Inc.,  
Stantec Consulting Services Inc.  
Sunrise Engineering

### Filtration

Aqua-Aerobic Systems, Inc.  
BDP Industries, Inc.  
Smith & Loveless Inc.  
The Coombs-Hopkins Company

# USEMCO Custom Water Booster Systems

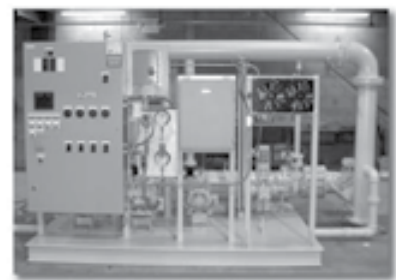
## Aqua Pak®



## Below Grade



## Skid



*Entire Station UL Listed, Assembled, Wired, and Ready to Install!*

### Control Systems®

- H<sub>2</sub>PRO 
- VFD
- Constant Speed
- Telemetry
- Local Pressure

### Factory Tested



### Valve and Meter Vaults



**USEMCO®**

Box 550  
Tomah, Wisconsin 54660  
Phone: 608-372-5911  
Fax: 608-372-5016  
Visit us at: [www.usemco.com](http://www.usemco.com)

Represented By:

**Ambiente H2O Inc.**  
**Art Oakes**  
925 East 900 South  
Salt Lake City, Utah 84105  
Phone: 801-815-8426  
Fax: 303-380-0664  
Email: [aoakes@ambienteh2o.com](mailto:aoakes@ambienteh2o.com)  
Visit us at: [www.ambienteh2o.com](http://www.ambienteh2o.com)



Aeromix  
AerResearch  
Aqua-Aerobic  
Azzuro-Air  
BCR Environmental  
BDP Industries  
Blue Water  
Boerger  
Columbian Tank  
Continental Blower  
Duall  
Dumpster Veyor  
Enpro  
Environetics  
Envirofax  
Enviroquip  
Fenton  
Fluid Dynamics  
Golden Harvest  
Hallsten  
Hayward Gordon  
Huber  
Jaeger  
JDV  
Komax  
Lakeside  
Landia  
Layfield  
Marsh McBirney  
Mastrrr  
Midwestern Fab  
Nefco  
Neuros  
Parker Ag  
Penn Valley  
PICA  
Plasti-Fab  
Polychem  
Poly Processing  
Polytech  
Process Solutions  
Purafil  
Seepex  
Severn Trent  
SSI  
Universal Blower  
Watson Marlow  
Wedeco UV  
WesTech  
Westfalia

**Contact:**  
**801-268-8790**

## SCREENINGS & HEADWORKS

### BLUE WATER

Pretreatment Screening

### DUMPSTERVEYOR

Solids Container Handling Systems

### HUBER TECHNOLOGY

Screens (Step, Perforated, Wedge Wire, Bar Rake, Septage, and for MBRs), Wash Press and Grit Washer

### JDV

Shaftless Screw Conveyors

### LAKESIDE

Screens (Perforated Plate, Bar, Septage, and for MBRs), Wash Press, Grit Removal and Grit Washers

### PLASTI-FAB

FRP Parshall Flumes, Weirs, Buildings, Slide Gates, Stop Logs

### POLYCHEM

Grit Removal System (Chain & Flight)

### WESTECH

Screens (Perforated Plate, Bar, Step, Sludge), Grit Removal, Grit Classifier

## AERATION & MIXING

### AEROMIX

Floating Aspirating Aerators and Coarse Bubble Diffusers

### AQUA-AEROBIC

Floating Surface Aerators and Mixers

### ENVIROPAX

Fixed Vertical Mixers for Selector and Anoxic

### KOMAX

Static Mixers

### LANDIA

Submersible Mixers and Recirculating Wall Pumps

### MASTRRR

Chemical Blending Flash / Induction Mixers

### NEUROS

Single Stage High-Efficiency Turbo Blower

### SSI

"Airflex" Disc & Tube Diffuser

### UNIVERSAL BLOWER

Positive Displacement Blower Package System

## TREATMENT PROCESSES

### AQUA-AEROBIC

Membrane Bioreactor and Sequencing Batch Reactors

### AZZURO-AIR

Biological Odor Control

### BLUE WATER

MBR Pretreatment

### ENVIROQUIP

"Kubota" Membrane Bioreactor "SymBio BNR" Aerobic

Digestion

### JAEGER

Plastic Media for Trickling Filters

### LAKESIDE

BNR Oxidation Ditches (Brush Rotors)

### WESTECH

Membrane Bioreactor (Flat Sheet)

Oxidation Ditch (Vertical Turbine Aeration),

Motorized Trickling Filter Rotary Distributor,

Hydraulic Trickling Filter Rotary Distributor,

Rotating Drum Aeration Process,

Slow Speed Mixing with Fine Bubble Aeration

## CLARIFICATION

### BLUE WATER

Sedimentation Removal

### LAKESIDE

Secondary Clarifiers

### NEFCO

FRP Stamford Density Current Baffles and Launder Covers

### POLYCHEM

Rectangular Non-Metallic Chain & Flight Clarifiers

### POLYTECH

Rotary Pipe & Helical Scum Skimmers

### WESTECH

Primary and Secondary Circular Clarifiers

## FILTRATION

### AQUA-AEROBIC

AquaDisk Cloth Media Filter and Traveling Bridge Sand Filters

### BLUE WATER

Continuous Up Flow Sand Filter, Phosphorous and Metals Removal, Filtration and Denitrification

### CONTINENTAL BLOWER

Centrifugal Blowers

### SEVERN TRENT

De-Nitrifying Effluent Filter

### WESTECH

Continuous Up Flow / Down Flow Sand Filter

## DISINFECTION

### MASTRRR

Chemical Blending Flash / Induction Mixers

### POLYPROCESSING

High Density Crosslinked Polyethylene Tanks

### PROCESS SOLUTIONS

"MicroOlor" Onsite Hypo Generation

### PURAFIL

Dry Scrubbing Systems for Odor Control

### WATSON MARLOW

Peristaltic Chemical Feed Pump

### WEDECO

Low Pressure/High Intensity UV System

## DIGESTION

### AEROMIX

Coarse Bubble Diffusers

### WESTECH

Mechanical Mixing, Digester Covers & Digester Heating Systems

## BIOSOLIDS PROCESSING

### BCR ENVIRONMENTAL

Class A Biosolids Treatment

### BDP INDUSTRIES

Gravity Belt and Rotary Thickeners, and Belt Filter Press

### ENPRO

Dry Chemical Feed Systems

### FENTON

Class "A" Sludge Drying Process

### FLUID DYNAMICS

Liquid and Dry Polymer Blending Systems

### HUBER

Screw Thickener, Screw Press, Disc Thickener, and Belt Dryer

### PARKER AG

Composting, Dewatering, Digester Cleaning, Lagoon Cleaning,

Land Application, Transportation

### WESTFALIA

Centrifuges

## PUMPING EQUIPMENT

### BOERGER

Rotary Lobe Pump and Grinder (Scum, Grease and Sludge)

### HAYWARD GORDON

Chopper, Screw Centrifugal and Recessed Impeller Pumps

### LAKESIDE

Screw Pumps

### PENN VALLEY

Double Disc Sludge/Scum Pump

### SEPEX

Progressive Cavity Pumps

### WATSON MARLOW

Peristaltic Pumps (Chemical Feed & Sludge)

## SPECIALTIES

### COLUMBIAN TECTANK

Bolted Steel Storage Tanks

### DUALL

Carbon, Chemical, & Biological Odor Control

### ENVIRONETICS

Floating Baffle and Clearwell Curtains

### HALLSTEN

Aluminum Flat Covers

### LAYFIELD

Lagoon Liners, Covers and Baffles

### MARSH MCBIRNEY

"FLO-DAR" Open Channel Flowmeter & Hach Sigma Flowmeters

### MIDWESTERN FABRICATORS

FRP Troughs, Ductwork, Covers and Tanks

### PICA

GAC and PAC Media

## PRODUCTS & SERVICES SOURCE GUIDE

### Fold And Form Pipe Lining

Val Kotter & Sons

### General Industrial

Aqua-Aerobic Systems, Inc.

### Green Water

WesTech Engineering Inc.

### Grit Removal & Washing

Smith & Loveless Inc.

### Headworks Screening

Ambiente H2O Inc.

### Inspector/Locators

Pollard Water

### Laboratories/Supplies

Pollard Water

### Manhole Inspecting/ Locating/Mapping

J-U-B ENGINEERS, Inc.  
SpectraShield Liner Systems  
Twin D Environmental Services  
Val Kotter & Sons

### Meters/Meter Testing

Master Meter, Inc.  
Neptune Technology Group Inc.

### Meter Reading Systems

Master Meter, Inc.

### Odor Control

Goble Sampson Associates  
The Coombs-Hopkins Company

### Packaged Pump Stations

Oldcastle Precast

### Pipe & Appurtenances

Advanced Drainage Systems, Inc.

### Pipe Cleaning & Televising

Twin D Environmental Services  
Val Kotter & Sons

### Process Mechanical

Aqua-Aerobic Systems, Inc.  
BDP Industries, Inc.  
Brown and Caldwell  
CH2M Hill  
Penn Valley Pump Co., Inc.  
WesTech Engineering Inc.

### Pumps/Pump Systems

Ambiente H2O Inc.  
EC Power Systems  
Goble Sampson Associates  
Penn Valley Pump Co., Inc.  
Pollard Water  
Smith & Loveless Inc.  
USEMCO  
Vogelsang  
Wheeler Machinery Co.

### Real Time Monitoring & Control

Aqua-Aerobic Systems, Inc.  
E&M Services

### Regulatory Compliance

CH2M Hill  
J-U-B ENGINEERS, Inc.  
Hansen, Allen & Luce  
Sunrise Engineering

## Custom Dewatering Solutions.



With over 1,000 installations globally, **BDP's dewatering products include:**

- Gravity Belt Thickeners
- Belt Presses
- Rotary Drum Concentrators
- Equipment Restoration
- On-Site Service & Mobile Demos

**Dual Purpose** (left)  
1.5 m model 3DP is designed to operate as a Gravity Belt Thickener or Belt Press.

**Floor Level** (below left)  
3.0 m model 3DP  
Note: No platforms or stairs required!

**Compact** (below)  
0.9 m Model DDP Belt Press  
Great concept for small treatment plants.



**Sales:** (518) 527-5417  
**Factory:** (518) 695-6851  
**Fax:** (801) 296-1571

represented by:

**Goble Sampson Associates, Inc.**

3500 South Main Street, Suite 200  
Salt Lake City, Utah 84115

**Bus:** (801) 268-8790

**Bus Fax:** (801) 268-8792

**Email:** dritter@globesampson.com

### Residuals/Waste Management

BDP Industries, Inc.  
Brown and Caldwell  
CH2M Hill  
Vogelsang  
WesTech Engineering Inc.

### SCADA

E&M Services  
Forsgren Associates, Inc.  
Sunrise Engineering

### Sewer Flow Monitoring (Sanitary, Storm & CSO)

Goble Sampson Associates  
J-U-B ENGINEERS, Inc.

### Smoke Testing

Val Kotter & Sons

### Storage Tanks/Reservoir Systems

Ambiente H2O Inc.  
Forsgren Associates, Inc.  
Goble Sampson Associates  
Oldcastle Precast  
Sunrise Engineering

### Tools & Equipment

Penn Valley Pump Co., Inc.  
Wheeler Machinery Co.

### Ultraviolet Disinfection

Ambiente H2O Inc.  
The Coombs-Hopkins Company  
Trojan Technologies

### Utility Rates/Finance Consultants

Hansen, Allen & Luce

### Valves

Advanced Valve Technologies

### Video Pipeline Inspection Equipment

Twin D Environmental Services  
Val Kotter & Sons

### Waste Gas Burners/Flares

Shand & Jurs,  
an L&J Technologies Company

### Water Booster Stations

USEMCO

### Water Quality Monitors

MWH Americas Inc,

### Water Quality Testing

MWH Americas Inc,  
WesTech Engineering Inc.

### Water/Wastewater Treatment Systems

Advanced Drainage Systems, Inc.  
Advanced Valve Technologies  
Ambiente H2O Inc.  
Aqua-Aerobic Systems, Inc.  
BDP Industries, Inc.  
Brown and Caldwell  
Degremont Technologies  
Forsgren Associates, Inc.  
Goble Sampson Associates  
J-U-B ENGINEERS, Inc.

MWH Americas Inc,  
Oldcastle Precast  
Penn Valley Pump Co., Inc.  
Smith & Loveless Inc.  
Sunrise Engineering  
The Coombs-Hopkins Company  
Trojan Technologies  
WesTech Engineering Inc.



**For sixty years we've been committed to your success.**

By providing innovative products and services, Wheeler helps customers achieve the highest production possible at the lowest possible cost. With knowledgeable employees, certified technicians, exceptional parts availability and state-of-the-art technology, Wheeler gives you a competitive advantage. Rely on Wheeler, your proven business partner of 60 years, for solutions tailored to the way you do business.

**Wheeler CAT**

www.wheelercat.com | 10 Branch Locations | 800-652-8650

## COMPANY LISTINGS (Please think of these companies when you require a product or service)

### ▶ **Advanced Drainage Systems, Inc.**

4640 Trueman Boulevard  
Hilliard, OH 43026  
800-821-6710 Fax: 614-658-0204  
info@ads-pipe.com  
www.ads-pipe.com

### ▶ **Advanced Valve Technologies**

800 Busse Road  
Elk Grove Village, IL 60007  
847-364-3700  
avtkev@aol.com  
www.avtfittings.com

### ▶ **Ambiente H2O Inc.**

925 East 900 South  
Salt Lake City, UT 84105  
801-915-8426 Fax: 303-380-0664  
aoakes@ambienteh2o.com  
www.ambienteh2o.com

### ▶ **Aqua-Aerobic Systems, Inc.**

6306 North Alpine Road  
Loves Park, IL 61111  
815-654-2501 Fax: 815-654-2508  
solutions@aqua-aerobic.com  
www.aqua-aerobic.com

### ▶ **BDP Industries, Inc.**

2030 North 725 West  
Centerville, UT 84014  
518-527-5471 Fax: 801-296-0964  
Kelly@BDPIndustries.com  
BDPIndustries.com

### ▶ **Black & Veatch Corporation**

960 West LeVoy Drive Suite 200  
Salt Lake City, UT 84123  
801-281-5562 Fax: 801-281-1104  
champhenois@bv.com  
www.bv.com

### ▶ **Brown and Caldwell**

6955 Union Park Center Suite 270  
Salt Lake City, UT 84047  
801-316-9800 Fax: 801-565-7330  
pheck@brwncald.com  
www.browncaldwell.com

### ▶ **Carollo Engineers**

1265 Fort Union Boulevard., #200  
Midvale, UT 84047  
801-233-2500 Fax: 801-233-2501  
CAshcroft@carollo.com  
www.carollo.com

### ▶ **CH2M Hill**

215 South State Street, Suite1000  
Salt Lake City, UT 84111  
801-350-5200 Fax: 801-322-8245  
Jim.Schwing@CH2M.com  
www.CH2M.com

### ▶ **Degremont Technologies**

8007 Discovery Drive  
Richmond, VA 23229  
804-756-8423  
Sylvie.roy@degremont.com  
www.degremont-technologies.com

### ▶ **EC Power Systems**

3738 West 2340 South Suite E  
Salt Lake City, UT 84120  
801-886-1424 Fax: 801-886-1464  
marks@e-c-co.com  
www.ecpower.com

### ▶ **E&M Services**

1337 North Canyon Trails Drive  
Dammeron Valley, UT 84783  
435-559-0759  
eandmweb@gmail.com  
www.scadasystems4u.com

### ▶ **Forsgren Associates, Inc.**

370 East 500 South, Suite 200  
Salt Lake City, UT 84111  
801-364-4785 Fax: 801-364-4802  
rconover@forsgren.com  
www.forsgren.com

### ▶ **Goble Sampson Associates**

3500 South Main Street, #200  
Salt Lake City, UT 84105  
801-268-8790 Fax: 801-368-8792  
dritter@goblesampson.com  
www.goblesampson.com

### ▶ **Hansen, Allen & Luce**

6771 South 900 East  
Midvale, UT 84047  
801-566-5599 Fax: 801-566-5581  
bluce@hansenallenluce.com  
www.hansenallenluce.com

## Manufacturers Reps **Ambiente H2O Inc.** Proudly Representing

<b>Cornell PUMPS</b>	<b>HighTide Technologies</b> SATELLITE TELEMETRY	<b>PWTech</b> SLUDGE PRESSES
<b>Wilo PUMPS &amp; MIXERS</b>	<b>Severn Trent</b> UV DISINFECTION	<b>Neptune</b> CHEMICAL METERING PUMPS
<b>Duperon</b> BAR SCREENS	<b>Seepex Pumps</b> PROGRESSIVE CAVITY PUMPS	<b>Anue</b> LIFT STATION CLEANING SYSTEMS
<b>USEMCO</b> PUMP STATIONS	<b>Tank Connections</b> STEEL STORAGE TANKS	<b>USF Fabrications</b> ACCESS HATCHES
<b>WTW</b> PROCESS INSTRUMENTATION	<b>Mitsubishi Electric</b> OZONE GENERATORS	<b>EME</b> GANTRY AND DAVITS CRANES

Contact: Art Oakes ♦ 801.815.8426 ♦ email: aoakes@ambienteh2o.com ♦ www.ambienteh2o.com

# FORSGREN

*Associates Inc.*

Wastewater/Reuse ♦ Drinking Water ♦ Water Resources

801.364.4785 ♦ Forsgren.com

*engineering stronger communities™*





## WILL YOU BE READY FOR LOWER PHOSPHORUS LIMITS?

Discharge limits for phosphorus removal are more stringent than ever and pose a definite challenge for treatment plants. In most cases, the degree of removal required by a facility is determined by the quality of the receiving stream. Although a high degree of phosphorus removal can be achieved with a sophisticated secondary treatment process such as an AquaSBR® system or AquaPASS® system, some plants require even lower phosphorus levels. In this case, tertiary treatment is essential and lower levels can be achieved with an AquaDisk® or AquaDiamond® filter, AquaMB Process® or Aqua-Aerobic® MBR system.



### **AquaSBR®** Sequencing Batch Reactor

- Enhanced nitrogen and phosphorus removal in a single unit process, eliminating the need for separate secondary clarifiers.



### **Aqua-Aerobic® MBR** Membrane Bioreactor

- Enhanced biological nutrient removal in a compact footprint and direct filtration via submerged membranes.



### **AquaPASS®** Phased Activated Sludge System

- Time-managed aerobic and anoxic reactions in a continuous-flow process schematic. Nutrient removal is expedited via Phase Separator technology.



### **AquaMB Process®** Multiple Barrier Membrane System

- High level nutrient removal utilizing multiple barriers, featuring cloth media filters followed by membranes.



### **AquaDisk®/AquaDiamond®** Cloth Media Filters

- OptiFiber® pile cloth media provides advanced phosphorus removal.
- Disk and Diamond configurations



### **IntelliPro®** Monitoring and Control System

- Integrated comparative analysis.
- Automatic chemical addition.
- Proactive operator guidance via the BioAlert™ process notification program.



**isiWEST**

4175 Mulligan Drive | Longmont, CO 80504

**P** 970.535.0571 | **F** 970.535.0572

[info@isiwest.com](mailto:info@isiwest.com) | [www.isiwest.com](http://www.isiwest.com)

► **J-U-B ENGINEERS, Inc.**

466 North 900 West  
Kaysville, UT 84037  
801-547-0393 Fax: 801-547-0397  
gvance@jub.com  
www.jub.com

► **Master Meter, Inc.**

101 Regency Parkway  
Mansfield, TX 76012  
817-842-8000 Fax: 817-842-8100  
info@mastermeter.com  
www.MasterMeter.com

► **MWH Americas Inc,**

10619 South Jordan Gateway, Suite 100  
South Jordan, UT 84095  
801-617-3200 Fax: 801-617-4200  
Stanley.s.postma@mwhglobal.com  
www.mwhglobal.com

► **Neptune Technology Group Inc.**

1600 Alabama Highway 229  
Tallassee, AL 36078  
334-283-6555 Fax: 334-283-7293  
marketing@neptunetg.com  
www.neptunetg.com

► **Oldcastle Precast**

801 West 12th Street  
Ogden, UT 84404-5407  
888-965-3227  
steve.kingsland@oldcastle.com  
www.oldcastle.com/wastewater

► **Penn Valley Pump Co., Inc.**

998 Easton Road  
Warrington, PA 18976  
215-343-8750 Fax: 215-343-8753  
info@pennvalleypump.com  
www.pennvalleypump.com

► **Pollardwater**

17515 NE 67th Court  
Redmond, WA 98052  
800-437-1146 Fax: 425-861-7235  
info@pollardwater.com  
www.pollardwater.com

► **Shand & Jurs,  
an L&J Technologies Company**

5911 Butterfield Road  
Hillside, IL 60162  
708-236-6000 Fax: 708-236-6006  
mlatif@ljtechnologies  
www.sandj.com

► **Smith & Loveless Inc.**

14040 Santa Fe Trail Drive  
Lenexa, KS 66215  
913-888-5201 Fax: 913-894-0488  
answers@smithandloveless.com  
www.smithandloveless.com

► **SpectraShield Liner Systems**

1301 East 58th Avenue  
Denver, CO 80216  
303-250-3191 Fax: 303-223-2891  
mmaga@ccispectrum.com  
www.spectrashield.com

► **Stantec Consulting Services Inc.**

3995 South 700 East, Suite 300  
Salt Lake City, UT 84107  
801-261-0090 Fax: 801-266-1671  
darrel.dixon@stantec.com  
www.stantec.com

Attention Treatment Plant Operators

Let us pump your sludge. Then you be the judge.

Put our pump to the test. There's no cost to you. Take the PVP Challenge and prove it to yourself.



We are so confident in our pumps' ability to reduce your overall maintenance and labor costs that we will let you take one for a test drive... for FREE. You provide the application and we'll provide the unit. It's that simple! PVP Double Disc®, Positive Displacement pumps feature:

- Seal-less, gland-less, oil-less design for zero routine maintenance.
- Will run dry indefinitely without damaging the pump.
- Passes solids up to 2 inches in diameter and full-line semi-solids.
- Fewer moving parts means less need for repairs or maintenance.
- Patented Maintain-in-Place design reduces downtime and lowers maintenance costs.



Step 1-Suction Cycle.



Step 2-Discharge Cycle.

**The PVP Difference**  
The repair of progressive cavity or rotary lobe-style pumps can be complex and costly. Our Double Disc® Pump system will operate up to 10 times longer in the same application and cost up to 70% less to repair when the need occurs.

**Swap Your Pump**  
Install one of our pumps and put it to the test. There's no cost to you.



Represented by:  
Goble Sampson Associates, Inc.  
3500 S. Main St., Suite 200  
Salt Lake City, UT 84115  
Phone: 801-268-8790  
Fax: 801-268-8792

Toll Free: 800-311-3311  
PennValleyPump.com




Water Environment Federation  
Part Innovative Award Winner  
Solid Handling Division

► **Sunrise Engineering**

12227 South Business Park Drive, Suite 220  
Salt Lake City, UT 84020  
801-523-0100 Fax: 801-523-0990  
kbrown@sunrise-eng.com  
www.sunrise-eng.com

► **The Coombs-Hopkins Company**

2825 East Cottonwood Parkway #500  
Salt Lake City, UT 84121  
801-990-3174 Fax: 801-990-3247  
mike@coombshopkins.com  
www.coombshopkins.com

► **Trojan Technologies**

3020 Gore Road  
London, ON N5V 4T7  
888-220-6118  
info@trojanuv.com  
www.trojanuv.com

► **Twin D Environmental Services**

3038 North 750 East  
Layton, UT 84041  
801-771-3038 Fax: 801-771-3040  
medenny1@twind.net  
www.twind.net

► **USEMCO**

PO Box 550  
Tomah, WI 54660  
608-372-5911 Fax: 608-372-5016  
sales@usemco.com  
www.usemco.com

► **Val Kotter & Sons**

1035 West Forest Street  
Brigham, UT 84302  
435-734-9598 Fax: 435-734-9870  
pearl@valkotterandsons.com  
www.valkotterandsons.com

► **Vogelsang**

PO Box 751  
Ravenna, OH 44266  
330-296-3820 Fax: 330-296-4113  
sales@vogelsangusa.com  
www.vogelsangusa.com

► Please support these advertisers that support us

► **WesTech Engineering Inc.**

3665 South West Temple  
Salt Lake City, UT 84115  
801-265-1000 Fax: 801-265-1080  
info@westech-inc.com  
www.westech-inc.com

► **Wheeler Machinery Co.**

4901 West 2100 South  
Salt Lake City, UT 84120  
801-974-0511  
info@wheelercat.com  
www.wheelercat.com

# TWIN "D" INC.

ENVIRONMENTAL SERVICES



- Pipe Cleaning / Vacuuming
- Video Inspection / Locating
- Tap Cutting / Root Removal
- "Link Pipe" Spot Repairs
- Hydro Excavation
- Rotational Maintenance Plans

Phone: (801) 771-3038  
Fax: (801) 771-3040  
www.twind.net

Co-owners:  
Mark & Dave Denny

Toll Free: 1-866-337-9263

3038 N. 750 E.  
Layton, UT 84041

Represented by:



2912 S West Temple  
Salt Lake City, UT 84115  
(801) 466-3819  
www.wcubedinc.com



**VOGELSANG**  
ENGINEERED TO WORK

### HIFLO ROTARY LOBE PUMPS

High Performance Pumping  
HiFlo Pumps handle heavy solids,  
are pulsation-free and  
easy to maintain.



### HIGH VOLTAGE DISINTEGRATION SYSTEM



## Introducing BioCrack!

A revolutionary new way to increase gas output and reduce energy consumption.

- Increases Gas Output
- Enhances Dewatering
- Reduces Solids Content
- Reduces Polymer Use

Call W-Cubed for details and to set up a 30 day trial.

www.vogelsangusa.com  
(800) 984-9400

# Industrial Pretreatment Semiannual Workshop

**O**n November 17, 2011 Central Weber Sewer District hosted an Industrial Pretreatment Workshop for pretreatment personnel, managers and regulators at their facility in Slaterville. Over 40 attendees received training by Jennifer Robinson and Matt Garn of the Utah Department of Environmental Quality on Pretreatment Program audits, annual reports and other

regulatory issues. Also discussed was how we as WEAU pretreatment professionals can play a larger role in the Region 8 Pretreatment Association (R8PA).

Following the presentation by Jen and Matt the group divided into smaller 'buzz groups' and first reviewed the three objectives of Industrial Pretreatment:

1. Prevent interference at the POTW

2. Prevent pass-through of pollutants
3. Improve opportunities to recycle

Each group then discussed keep our respective industrial surveys how to conduct a proper and effective inspection, proper sampling updated, techniques, industrial user tracking software, and enforceable permit language. Reports from each buzz group were given and ideas for future workshop topics were discussed.

After a delicious lunch catered by Famous Dave's, attendees divided into two groups, donned appropriate PPE and toured two of Central Weber's Significant Industrial Users. Brett Nelson and Travis Hipwell arranged for group tours of the Admiral Beverage Company and the Elkay stainless steel sink manufacturing facility. Valuable experience was gained in inspecting these types of industrial users.

The Pretreatment Committee realizes that continuing education is vital in order to keep current in our understanding of regulations and how they affect our programs. We also seek to constantly improve our skills and methods to protect POTWs and our water environment.

Thanks to Central Weber Sewer District for hosting the workshop and particularly Brett Nelson and Travis Hipwell for their efforts in organizing the tours. The people at both Admiral Beverage and Elkay were very gracious in accommodating our groups.

With the presentation by Jennifer and Matt, tours at some interesting Industrial Users as well as input from more seasoned coordinators and enthusiasm from the newcomers all combined for a very beneficial workshop.

Pretreatment Committee members:

Blair Blonquist, Brad Jones, Brett Nelson, Dan Morrison, David Land, Sarah Leavitt, Jeff Macfarlane. [DA](#)



Here & There

**FIND US IN YOUR TOWN AND ALL OVER THE GLOBE.** What if the solutions you seek are found in far-flung places? Wherever in the world innovation is happening, Black & Veatch can bring the best of international water knowledge right to your local community. We're building a world of difference. Together.

Salt Lake City 801-281-5562  
 Denver 720-834-4267  
[weknowwater@BV.com](mailto:weknowwater@BV.com)



Consulting • Engineering • Construction • Operation | [www.BV.com](http://www.BV.com)

## Awards Committee Needs:

**W**e are in need of experienced individuals to chair various evaluation committees:

- Pretreatment
- Collections
- Safety
- Operators
- Others

The kickoff meeting for the awards committees will be January 4, 2012 at 195 North 1950 West in Salt Lake City. Individuals will have the opportunity to visit nominated facilities and individuals throughout the State. Groups will be formed with three to five people with a lead. The lead in the group is required to have three years experience and be willing to coordinate the other members in the group to visit with the nominees, previous winners are a plus.

Forms will be provided at the kickoff meeting for CEU's to be submitted to Judy Etherington, once the committees have completed the visits with the nominees

The WEAU awards program publicly recognizes excellence in individuals and entities in many areas of our industry throughout the year.

Some of the rewards & benefits to you:

- State Wide Recognition
- Community Recognition & Exposure
- P/R and Marketing Opportunities
- Prestige and Enhanced Reputation
- Capacity and Leadership
- Award for Prominent Display
- Boost to Employee Morale
- Training/CEU'S
- Networking [Dn](#)



## Be an author



Visit us online, [www.weau.org](http://www.weau.org)

**advancing\*innovation™**

We are focused on client needs, bringing decades of engineering and scientific experience to every project.

Wastewater Engineering | Planning and Modeling | Biosolids Collection Systems | Infrastructure | Asset Management

**Brown AND Caldwell** Salt Lake City | 801.316.9800  
100% Environmental | Employee Owned | BrownandCaldwell.com

2012

**April 17-20**

Dixie Center  
St. George, Utah

2012

WEAU Annual Conference

Abstracts for presentations will be due in January

FOR MORE INFORMATION VISIT US ONLINE [WWW.WEAU.ORG](http://WWW.WEAU.ORG)



**Waste Gas Flares • Anaerobic Digester Cover Equipment • Digester Gas Stream Equipment**

## Shand & Jurs Biogas Waste Gas Flares

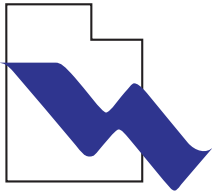
Shand & Jurs Biogas manufactures a complete line of Waste Gas Flares for anaerobic digestion in municipal waste water treatment plants as well as for landfills, food processing and dairies.

We offer both Open Candlestick and Enclosed Flares to help reduce emissions. Our Candlestick Flares are offered with options for automatic ignition at the tip of the Flare or at ground level. Our Enclosed Flares are designed for places with strict emission regulations or where open flames are not permitted.

All of our 97300 Series of Flares are now offered with an optional Local Touch Screen Control Panel. Designed with the system operator in mind, the new touch screen control panel offers easy, more precise control. The Touch Screen Control Panel is designed for complete automatic operation of the entire Flare System and can monitor temperature, the pilot, spark, etc.

Shand & Jurs Biogas manufactures a complete line of Digester Gas Safety and Gas Stream Equipment as well as Waste Gas Flares. Located in the greater Chicago area, Shand & Jurs manufactures and tests all of our equipment at our state of the art facility.





# General Association Awards NOMINATION FORM

Instructions: Place a "Y" mark in the box next to the award for the nomination. Next, fill out the information for the nominee and yourself (nominator) as fully as you can, this information will be used by the selection committee to process the nomination. Please send a separate application for each nomination, **OK to copy form if needed for this purpose**. Next, FAX application to: (801) 536-4301, *no cover necessary*, e-mail to: [jenrobinson@utah.gov](mailto:jenrobinson@utah.gov), or mail to: **Division of Water Quality (attention Jennifer Robinson) PO Box 144870, Salt Lake City, Utah 84114-4870**. Applications are due by **December 15, 2011**.

WEAU is a member organization where members can nominate those individuals or organizations within our industry that deserve recognition by the association for their efforts. When you send in your nomination, you will be contacted to arrange a time for a visit by the awards committee. Individual awards must be nominated by someone other than nominee. Please notify their supervisor and have them sign the form. Members with significant managerial responsibilities, (i.e., general managers, etc.) are ineligible. Those with significant supervisory responsibilities, (i.e., coordinators, directors, etc.) should be considered for the supervisor award, or program award. If you have any questions, please feel free to contact Jen Robinson at (801)536-4383. Good Luck.

Plant under 5 MGD	Plant over 5 MGD	Laboratory
Discharging Lagoon	Non-Discharging Lagoon	Laboratory Technician
Operator under 5 MGD	Operator over 5 MGD	Safety
Collection System under 5 MGD	Collection System over 5 MGD	Maintenance Specialist
<b>Collection Operator under 5 MGD</b>	<b>Collection Operator over 5 MGD</b>	Supervisor
Pretreatment Program	Pretreatment Specialist	Biosolids Program
Young Professional		



### Nominee Information:

Name (As it will appear on the Plaque): \_\_\_\_\_

Facility Name: \_\_\_\_\_

Facility Manager: \_\_\_\_\_

Address: \_\_\_\_\_

City/State/Zip: \_\_\_\_\_

Phone/Fax: \_\_\_\_\_

Supervisor's signature: \_\_\_\_\_

### Nominee Information:

Name: \_\_\_\_\_

Address: \_\_\_\_\_

City/State/Zip: \_\_\_\_\_

Phone/Fax: \_\_\_\_\_

Briefly describe why you think the nominee should be considered for an award: \_\_\_\_\_

\_\_\_\_\_

\_\_\_\_\_

**FAX FORM TO:**  
**(801) 538-4301**  
or  
**E-mail FORM TO:**  
**Jenrobinson@utah.gov**  
or  
**Mail FORM TO:**  
**Division of Water Quality**  
**Attn: Jennifer Robinson**  
**PO Box 144870**  
**Salt Lake City,**  
**UT 84114-4870**  
**By Dec. 15, 2011**



Logan, Utah Project

## **SaniTite® (HP)** Your Choice for Sanitary Sewer Performance

HIGH PERFORMANCE

### Features & Benefits

- Available in a dual wall (12"-30") or exclusive triple wall (30"-60") design
- Meets ASTM Specifications F2736 and F2764
- All diameters meet or exceed a pipe stiffness minimum of **46pii**.
- Manufactured with an advanced polypropylene resin
- Chemically resistant to sanitary hydrogen sulfide gas and sulfuric acid
- Joint adds safety with reinforced bells and dual gaskets
- Smooth interior provides excellent flow characteristics
- Available in standard 20' length for faster installations, while 13' length is ideal for tight work conditions and maneuverability

For more information on SaniTite HP and all the advanced solutions ADS has to offer, please contact:

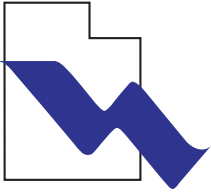
**Ryan Loader** 801-918-8905 [ryan.loader@ads-pipe.com](mailto:ryan.loader@ads-pipe.com)

**Travis Hansen** 801-502-4566 [travis.hansen@ads-pipe.com](mailto:travis.hansen@ads-pipe.com)



ADVANCED DRAINAGE SYSTEMS, INC.  
800-821-6710 [www.ads-pipe.com](http://www.ads-pipe.com)





# WEAU Sponsorship Form 2012 Calendar Year

WEAU is continuing our annual sponsorship program for 2012. As always the premier sponsors will sponsor all WEAU events for a reduced rate. For example, a Premier Platinum Sponsorship costs \$1,500, as compared to \$2,800 for Platinum Sponsorship for all single events. To sign up for WEAU sponsorship for 2012, please fill out this form and return it with your check payable to WEAU or go to <http://www.weau.org/weausupport> and sign up on line. Sponsorship does not include registration at any event. Thank you for your continued support of WEAU!

		Platinum	Gold	Silver	Amount Enclosed
1	Premier Sponsorship (advertising at all WEAU events, including annual conference, annual conference golf tournament, mid-year conference, PWO Golf Tournament, PWO Operator's Challenge)	\$1,500	\$1200	\$800	
2	Annual Conference Only Sponsorship	\$1000	\$700	\$500	
3	Mid-Year Conference Only Sponsorship	\$600	\$300	\$200	
4	Annual Conference Golf Tournament Only Sponsorship	\$400	\$300	\$200	
5	PWO Golf Tournament Only Sponsorship	\$400	\$300	\$200	
6	PWO Operator's Challenge Only Sponsorship	\$400	\$300	\$200	
7	Sponsorship for One Mid-Year conference Student			\$50/Ea	
Total Sponsorship Amount Enclosed					\$

## Sponsorship Levels

### • Platinum Level

- Company Logo on Event Signage
- Company Logo on Conference Programs
- Public Recognition at Events
- Company Logo on WEAU's Web site (Premier sponsors only)

### • Gold Level

- Company Logo on Event Signage
- Company Name on Conference Programs

### • Silver Level

- Company Name on Event Signage
- Company Name on Conference Program



Company Name: \_\_\_\_\_

Contact Person: \_\_\_\_\_

Address: \_\_\_\_\_

City/State/Zip: \_\_\_\_\_

Phone/Fax: \_\_\_\_\_

Email: \_\_\_\_\_

**To register for a sponsorship, complete this form and mail it the address below or Go to <http://www.weau.org/weausupport> and register online**

**WEAU**  
**PO Box 651028, Salt Lake City, UT 84165-1028**

### Questions?

**Contact Dan Olson at 435-241-0204 or at [DanO@Tooelecicity.org](mailto:DanO@Tooelecicity.org)**  
**Send logos in .jpg or .tif format to Dan Olson at: [DanO@Tooelecicity.org](mailto:DanO@Tooelecicity.org)**  
 (Sponsorship forms must be received by February 24th 2012 to be included in Annual Conference)

**Our concern for the environment**



## **is more than just talk**

**As we continue to deliver valuable information through the pages of this magazine, in a printed format that is appealing, reader-friendly and not lost in the proliferation of electronic messages that are bombarding our senses, we are also well aware of the need to be respectful of our environment. That is why we are committed to publishing the magazine in the most environmentally-friendly process possible. Here is what we mean:**

- We use lighter publication stock that consists of recycled paper. This paper has been certified to meet the environmental and social standards of the Forest Stewardship Council™ (FSC®) and comes from responsibly managed forests, and verified recycled sources making this a RENEWABLE and SUSTAINABLE resource.
- Our computer-to-plate technology reduces the amount of chemistry required to create plates for the printing process. The resulting chemistry is neutralized to the extent that it can be safely discharged to the drain.
- We use vegetable oil-based inks to print the magazine. This means that we are not using resource-depleting petroleum-based ink products and that the subsequent recycling of the paper in this magazine is much more environment friendly.
- During the printing process, we use a solvent recycling system that separates the water from the recovered solvents and leaves only about 5% residue. This results in reduced solvent usage, handling and hazardous hauling.
- We ensure that an efficient recycling program is used for all printing plates and all waste paper.
- Within the pages of each issue, we actively encourage our readers to REUSE and RECYCLE.
- In order to reduce our carbon footprint on the planet, we utilize a carbon offset program in conjunction with any air travel we undertake related to our publishing responsibilities for the magazine.

***So enjoy this magazine...and KEEP THINKING GREEN.***

# USU Design Team places 2nd at WEFTEC

**U**SU Design Team went to WEFTEC to compete and won 2<sup>nd</sup> Place overall in the Student Design Competition for the Wastewater Design against seven other Teams. Congratulations!

**Faculty Advisor:**  
**Dr. Ryan Dupont**

**Team Members:**  
**Camilla Snow, Diana Pribble, Riley Bradshaw** 



Learn at your own pace. All you need is an internet connection.

Whether this is your introduction to wastewater treatment, a refresher course, or an intellectual stimulator, WEF's Distance Learning training courses cover operation, design, and engineering from top to bottom. More than just a series of online quizzes, these courses offer hours of instructional material needed by wastewater professionals.

Choose from a number of fundamental and accelerated courses, ranging from 1 to 7 hours worth of content and recommended educational credit.



<http://training.wef.org>



# Poster Competition

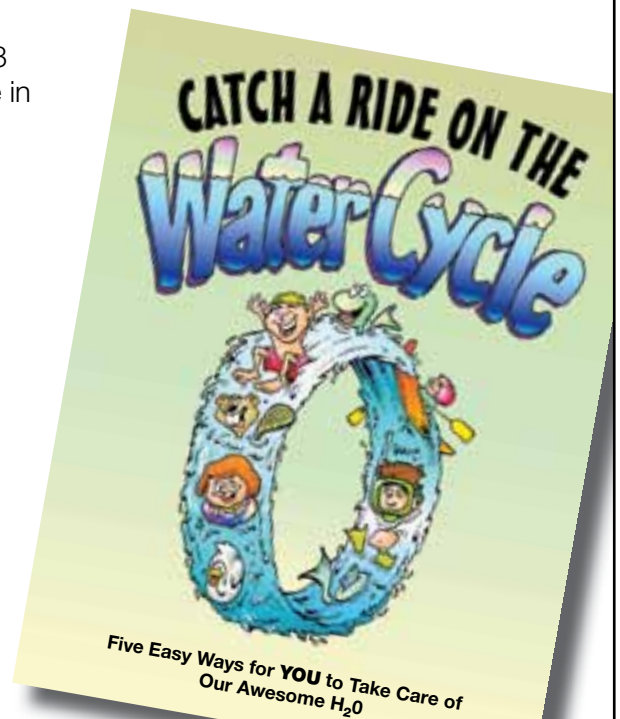
The 1st Place \$500 winner of the 2011 WEAU Midyear Conference Poster Competition: Andrew Hobson [DIA](#)



## New and Free! Coloring Book from WEF



This fun and educational coloring book for grades k-3 can be easily downloaded for free and copied for use in classrooms or other settings. Check it out at [www.wef.org/coloringbook](http://www.wef.org/coloringbook).



## Advertisers' Index

*Digested News* would not be possible without the advertising support of these companies and organizations. Please think of them when you require a product or service. We have endeavoured to make it easier for you to contact these suppliers by including their telephone number and, where applicable, their websites.

Company	Page Number	Telephone	Website
ADS-PIPE	33	800-821-6710	www.ads-pipe.com
Advanced Valve Technologies	11	877-489-4909	www.avtfittings.com
Ambiente H2O	24	801-815-8426	www.ambienteh2o.com
Aqua-Aerobic Systems	25	815-654-2501	www.aqua-aerobic.com
BDP Industries, Inc.	22	518-527-5417	www.bdpindustries.com
Black & Veatch	28	801-281-5562	www.bv.com
Brown and Caldwell	29	801-316-9800	www.browncaldwell.com
Carollo	12	801-233-2500	www.carollo.com
CCI Spectrum	6	800-284-2030	ccispectrum.com
CH2M HILL	4	801-350-5200	www.ch2m.com
Coombs-Hopkins	12	801-990-3174	www.coombshopkins.com
Degremont Technologies	2	801-466-3819	www.degremont-technologies.com
E & M Services	8	435-559-0759	www.scadasystem4u.com
EC Power Systems	17	801-886-1424	www.ecpower.com
Forsgren Associates, Inc.	24	801-364-4785	www.forsgren.com
Goble Sampson Associates	21	801-268-8790	www.goblesampson.com
Hansen, Allen & Luce, Inc.	18	801-566-5599	www.hansenallenluce.com
J-U-B Engineers Inc.	13	801-547-0393	www.jub.com
Master Meter	4	800-765-6518	www.mastermeter.com
MWH Americas, Inc.	12	801-617-3200	www.mwhglobal.com
Neptune Technology Group Inc	39	800-633-8754	www.neptunetg.com
Oldcastle Precast	15	888-965-3227	www.oldcastleprecast.com/wastewater
Penn Valley Pump	26	800-311-3311	www.pennvalleypump.com
Pollardwater	3	800-437-1146	www.pollardwater.com
Shand & Jurs, an L&J Technologies Company	31	708-236-6000	www.ljtechnologies.com
Smith & Loveless Inc.	10	800-898-9122	www.smithandloveless.com
Stantec Consulting	18	801-261-0090	www.stantec.com
Sunrise Engineering Inc.	6	801-523-0100	www.sunrise-eng.com
Trojan Technologies	7	888-220-6118	www.trojanuv.com
Twin "D" Environmental Services	27	801-771-3038	www.twind.net
Usemco	20	608-372-5911	www.usemco.com
Val Kotter & Son's	14	435-734-9598	www.valkotterandsons.com
Voglesang	27	800-984-9400	www.voglesangusa.com
Westech Engineering	40	801-265-1000	www.westech-inc.com
Wheeler Machinery Co.	23	801-974-0511	www.wheelercat.com



To reach Utah's water industry professionals through the *Digested News* magazine and its targeted readership, contact Chad at your earliest convenience to discuss your company's promotional plans.

**Chad Morrison, Marketing Manager**

Phone: 866-985-9788 Fax: 866-985-9799 E-mail: [chad@kelman.ca](mailto:chad@kelman.ca)

---

**THE IDEAL  
COMBINATION OF  
RELIABILITY,  
EFFICIENCY, AND  
PURE  
ANIMAL  
MAGNETISM.**

---

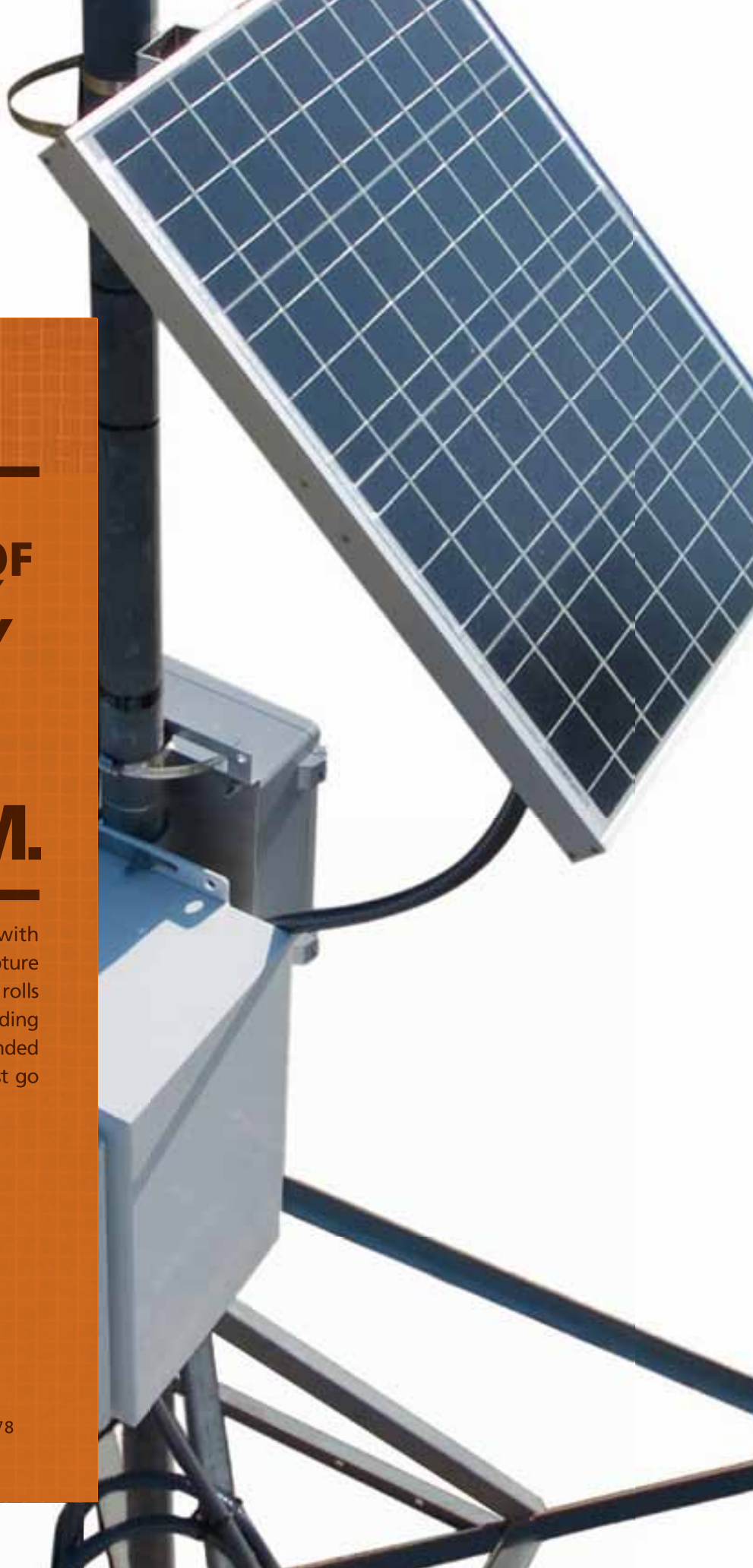
Draw thousands of reads straight to you with Neptune's R900® Gateway Data Collector. Capture reads in dense populations. Eliminate truck rolls for move-ins/move-outs. Support fixed reading within mobile routes. All while reducing stranded assets. To get to full fixed network AMR, just go through the Gateway.



**ARB**® UTILITY  
MANAGEMENT  
SYSTEMS™

[neptunefg.com](http://neptunefg.com)

1600 Alabama Highway 229, Tallahassee, AL 36078  
334.283.6555 • 1.800.633.8754 ext.437



# The Next Generation of Screw Wash Presses

## *Doing Things Better*

Unlike other screw wash presses in which the design of the discharge pipe creates the back pressure necessary to dewater screenings, **WesTech's CleanWash™ Screw Wash Press and Counter Pressure Screw** regulates just the right amount of back pressure to meet the highly variable influent. The positive conveyance of the screenings after each washing cycle means up to 70% dry solids without fear of plugging through 10, 20 or even 30 feet of discharge piping.

## ***Superior Dewatering***

***DS Contents of Up to 70%***

***Volume Reductions Up to 80%***

***Cleaner for the Environment***

***Patented CPS Design***



**CleanWash™ SWP/CPS**



***75% less weight  
per cubic foot***



**CleanWash™ SWP/CPS**



**GOBLE  
SAMPSON  
ASSOCIATES INC.**

**Your Utah Local Representative  
for WesTech Process Equipment.  
Dave Ritter 801.268.8790**

[www.goblesampson.com](http://www.goblesampson.com) Salt Lake City, Utah USA

**WESTECH**  
Process Equipment. Process Driven.

**MELVA**

Info: Telephone 801.265.1000  
[www.westech-inc.com](http://www.westech-inc.com)  
Salt Lake City, Utah USA

