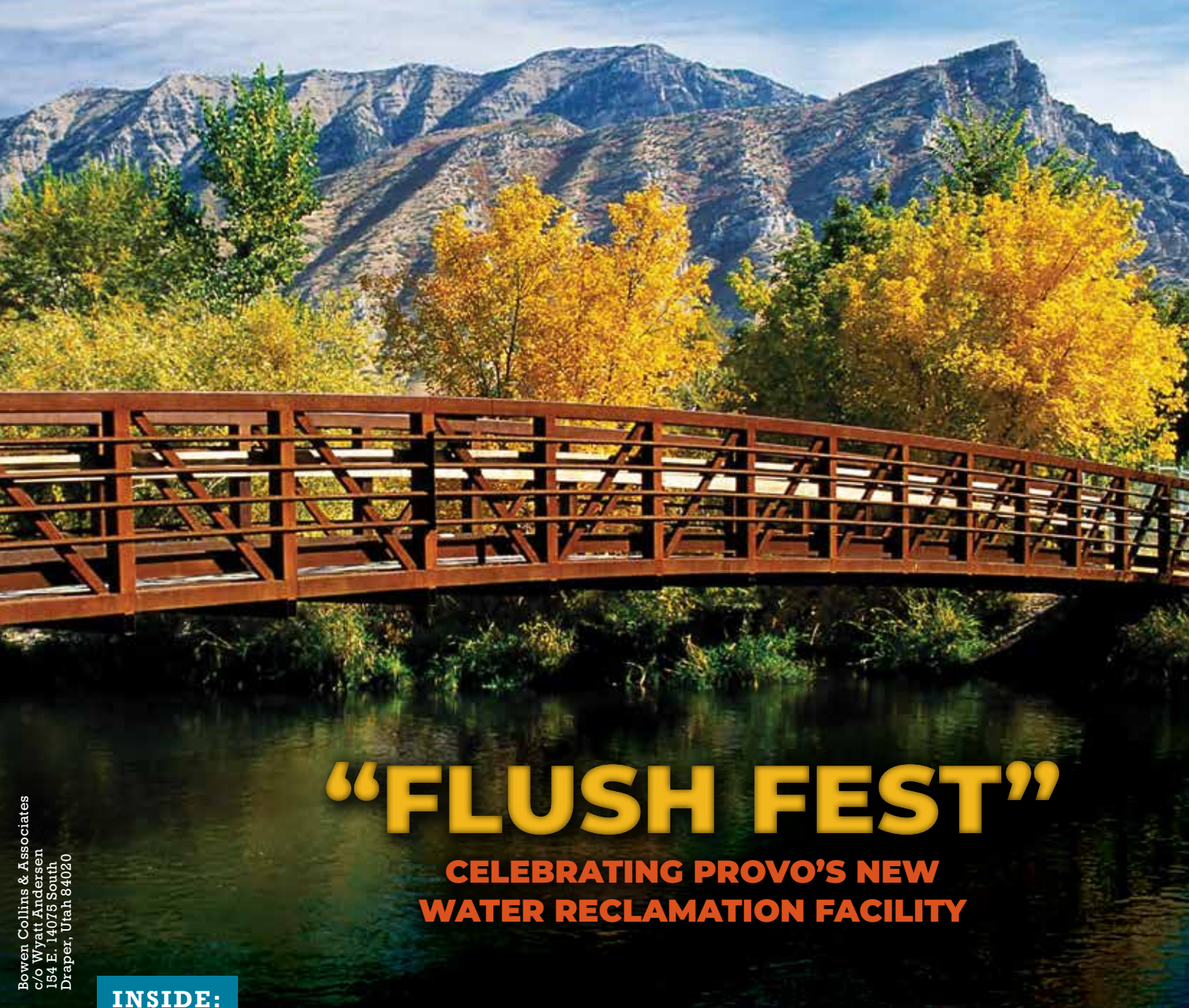


F A L L  
2 0 2 5

The Official Publication of the Water Environment Association of Utah

# DIGESTED news

*Celebrating 50 Years of Clean Water*



## “FLUSH FEST”

**CELEBRATING PROVO'S NEW  
WATER RECLAMATION FACILITY**

**INSIDE:**

2025 Mid-Year Conference Preview | Wastewater Micro

Bowen Collins & Associates  
c/o Wyatt Andersen  
154 E. 14075 South  
Draper, Utah 84020



## Discover the Cost-Effective Difference ACO Stormbrixx Makes For You.



### Schoonover Case Study

The Schoonover Plumbing ACO Stormbrixx project was brought to Mountain Supply out of a need to find a cost-effective way to eliminate an on-site drainage pond, while staying in compliance with the current State of Utah Stormwater Requirements. In order to eliminate the pond, it was determined that an underground stormwater detention system would be necessary. Working with Mustang Design and ACO an appropriately sized below ground retention system was designed for the site that included two access and maintenance points. Once approved, the system was installed with on-site assistance from Mountainland Supply.

By using Stormbrixx the owner was able to eliminate the pond by detaining the stormwater under their parking lot in a Stormbrixx system. This system not only saved the owner from wasting land but created a structurally sound “modular vault” that will be able to be maintained for years to come. By retaining and infiltrating the storm water 100% on site the owner was able to eliminate the extra cost incurred by connecting to the city’s storm sewer system.



Call Your Mountainland Sales Rep.  
for a FREE Site Evaluation and Solution!





# WE ARE BUILDERS, WATER EXPERTS

## PLANNERS, PARTNERS, CRAFTSMEN

We are an established industry leader with deep general contracting, construction management and design-build experience in three key areas: pump stations, wastewater treatment facilities and water treatment plants. Our top reputation in this technically complex area stems from a combination of sophisticated project management skills and extensive self-performance capabilities.



**#1 RANKED**  
Wastewater Treatment  
and Desalination Plant Builder



**#2 RANKED**  
Water Treatment  
Plant Builder



**#3 RANKED**  
Sewerage and  
Solid Waste Builder



**#3 RANKED**  
Water Supply  
System Builder



**#15 RANKED**  
Largest U.S.  
National Contractor

\*2024 ENR TOP CONTRACTORS LIST



ARCHER WESTERN

10436 S 1055 W SUITE 101 | SOUTH JORDAN, UT 84095 | [WWW.ARCHERWESTERN.COM](http://WWW.ARCHERWESTERN.COM)



**LAKESIDE**

EQUIPMENT CORPORATION

Water Purification Since 1928

## LOOKING FOR THE PERFECT PIECE TO COMPLETE YOUR PLANT DESIGN?

**Whether your plant requires screening, grit removal, aeration, clarification, complete system design, or drop-in replacements, Lakeside Equipment has the expertise to solve your most puzzling plant design challenges simply and reliably.** Our rugged, durable equipment is engineered specifically for your application and fabricated here in the USA. Let us help you find the perfect fit to achieve your optimal plant design and performance goals.

Speak to one of our experts at **630.837.5640**, email us at [sales@lakeside-equipment.com](mailto:sales@lakeside-equipment.com) or visit [lakeside-equipment.com](http://lakeside-equipment.com) for more product information.



**LAKESIDE**

EQUIPMENT CORPORATION

Water Purification Since 1928

Cleaner Water for a Brighter Future®

### REPRESENTED LOCALLY BY:



**Goble Sampson Associates**

3500 South Main Street  
Suite 200  
Salt Lake City, UT 84115  
Office: 801-268-8790

### TREATMENT EQUIPMENT AND PROCESS SOLUTIONS

Screw Pumps  
Raptor® Screening  
Screen and Trash Rakes  
Grit Collection  
Clarification

Biological Treatment  
Hauled Waste Receiving Systems  
Package Headworks Systems  
Biological Treatment Systems



# AquaPrime®

## CLOTH MEDIA FILTRATION SYSTEM

### ADVANCED TREATMENT FOR PRIMARY WASTEWATER AND INDUSTRIAL APPLICATIONS

The AquaPrime® filtration system utilizes OptiFiber PF-14® pile cloth media in a disk configuration with three zones of solids removal to effectively filter wet weather flows without the use of chemicals. The system is designed to handle a wide range of flows in a fraction of space compared to conventional clarifiers.

AquaPrime is ideal for primary filtration, primary effluent filtration and industrial wastewater due to its proven removal efficiencies and high quality effluent, even under varying influent conditions.

- Specifically designed floatable and settled solids removal zones
- Reduced energy costs in the secondary process due to reduction in organic loading
- More solids for increased biogas production in anaerobic digesters
- A footprint that is 15-20% of conventional primary treatment

Proudly Represented By:



**Davidson Sales & Engineering**  
West Valley City, Utah  
p. 801-823-6006 e. info@dseslc.com  
[www.dseslc.com](http://www.dseslc.com)



**AQUA-AEROBIC SYSTEMS, INC.**  
A Metawater Company

[www.aquaprimefiltration.com](http://www.aquaprimefiltration.com) | 815-654-2501



#### Linda County Water District, Olivehurst, CA

- Primary Filtration Application
- TSS removal greater than 75%
- BOD removal up to 60%



## Uncover hidden emissions. Improve safety, air quality, and achieve measurable gains.

Download the brochure to learn how your plant could benefit. >>

A recent methane emissions study at a large WWTP revealed 15% of total biogas production was being lost. These hidden leaks not only impact air quality but also pose safety risks. Many utilities are missing an opportunity to turn that 15% loss into a gain, including beneficial use for power and heat or other potential revenue generation.

With new funding opportunities and growing regulatory pressure nationwide, now is the time to act. Brown and Caldwell's proven detection strategy—featuring drone-based quantification and imaging tools—can help Utah's wastewater facilities to address fugitive methane issues with straightforward solutions.



Engineers | Scientists | Consultants | Constructors  
Employee Owned | Offices Nationwide | [BrownandCaldwell.com](http://BrownandCaldwell.com)

**WEAU  
BOARD OF DIRECTORS  
2025-2026**

**President**  
Steve Myers  
smyers@hach.com

**President-Elect**  
Gary Vance  
gvance@jub.com

**Vice President**  
Ben Skousen  
bskousen@brwnclad.com

**Secretary**  
Brandon Wyatt  
bwyatt@bowencollins.com

**Treasurer**  
Randy Zollinger  
rzollinger@carollo.com

**Deputy Treasurer**  
Lauren Schmidt  
lschmidt@jub.com

**Past President**  
Chad Burrell  
cburrell@sbwrd.org

**WEF Delegate**  
Clint Rogers  
clint.rogers@stantec.com

**WEF Delegate**  
Sarah Ward  
sarahward@utah.gov

**PWO Representative**  
Taylor Byrum  
tbyrum@nidsd.org

**PWO Representative-Elect**  
Cole Tubbs  
colet@centralweber.com

**Director**  
Tiffini Adams  
tadams@sbwrd.org

**Director**  
Katie Reams  
kreams@jub.com

**Director**  
Nate Cloward  
nate@cdsewer.org

**Director**  
Navneet Prasad  
prasadm@cvwrjfu.gov

**Editor**

Wyatt Andersen  
wandersen@bowencollins.com

**Published by:**



On behalf of the WEAU



Tel: 866-985-9780  
Fax: 866-985-9799

[www.kelmanonline.com](http://www.kelmanonline.com)

Managing Editor, **Katie Woychshyn**  
Design/Layout, **Kellee Breckman**  
Advertising Sales, **Kris Fillion**

Advertising Co-ordinator, **Sabrina Simmonds**



**FEATURES**

Chasing the Invisible:  
The Quest to Improve Safety and Air Quality ..... **24**

2025 Mid-Year Conference Preview ..... **26**

2025 WEAU Annual Conference Summary ..... **27**

The Awards are Coming! ..... **29**

Embracing Blind Spots and  
Overcoming Learned Helplessness ..... **30**

Committee Kickoff Training ..... **32**

Wastewater Micro ..... **34**

Flush Fest –  
Celebrating Provo’s New Water Reclamation Facility ..... **36**



**Departments**

President’s Message..... **8**    Young Professionals..... **20**

Editor’s Message ..... **10**    Lab Committee Corner ..... **38**

Collections Corner..... **12**    WEAU Platinum Sponsors..... **43**

PWO ..... **16**    Advertiser Product & Service Center.... **46**

Available Online **DIGESTED news**



With print and electronic communication operating hand-in-hand, you can take advantage of the fact that *Digested News* magazine is available online in a highly interactive format.

**A user-friendly, interactive Media Rich PDF format that includes:**

- 1.** Active hyper-links to all websites and emails contained in the publication
- 2.** Active links to the specific stories from the front cover and contents page
- 3.** Active links to advertiser websites from their ads



Steve Myers

# AI Won't Flush Us Out Just Yet

There's been a lot of chatter lately about which jobs are most likely to be replaced by artificial intelligence. A recent article making the rounds (you can find here: <https://arxiv.org/pdf/2507.07935>) listed the top 40 professions most likely – and least likely – to be disrupted by AI.

You know who's hanging on by a thread? Sales reps. Yep, right up there near the top of the list. So if you hear of any openings in embalming or pile driving, let me know! Of course we have no idea exactly how this all pans out, but I will be keeping my options open!

Now, on the flip side – right down there at the *very bottom* of the list – you'll find **Water Treatment Plant and Systems Operators**. That's right. Operators, you've chosen *wisely*. Congratulations! Go ahead and pat yourselves on the back for your prescient career decisions. Job security confirmed! Essential workers indeed! AI may be able to draft a legal brief, interpret a document, or parse incredibly large datasets, but it sure as hell won't be replacing a pump during a storm or troubleshooting a SCADA system on a Friday night.



And here's the kicker: all those servers powering the AI? All that cloud infrastructure? It's *incredibly thirsty*. Data centers are rapidly becoming one of the most water-dependent industries in the world.

Not just fresh water – but recycled wastewater, water and everything in between. So while the robots are coming for a lot of jobs, humanity still relies on *you* to keep the water flowing and clean. Something to be very proud of.

Long Valley Sewer Outfall

**SUNRISE ENGINEERING** | Planning, Design and Construction Services for Municipalities  
Providing Wastewater Solutions From 12 Locations Throughout Utah

[sunrise-eng.com](http://sunrise-eng.com)

# President's Message

Table 3: Top 40 occupations with highest AI applicability score.

Job Title (Abbrev.)	Coverage	Cmpltn.	Scope	Score	Employment
Interpreters and Translators	0.98	0.88	0.57	0.49	51,560
Historians	0.91	0.85	0.56	0.48	3,040
Passenger Attendants	0.80	0.88	0.62	0.47	20,190
Sales Representatives of Services	0.84	0.90	0.57	0.46	1,142,020
Writers and Authors	0.85	0.84	0.60	0.45	49,450
Customer Service Representatives	0.72	0.90	0.59	0.44	2,858,710
CNC Tool Programmers	0.90	0.87	0.53	0.44	28,030
Telephone Operators	0.80	0.86	0.57	0.42	4,600
Ticket Agents and Travel Clerks	0.71	0.90	0.56	0.41	119,270
Broadcast Announcers and Radio DJs	0.74	0.84	0.60	0.41	25,070
Brokerage Clerks	0.74	0.89	0.57	0.41	48,060
Farm and Home Management Educators	0.77	0.91	0.53	0.41	8,110
Telemarketers	0.66	0.89	0.60	0.40	81,580
Concierges	0.70	0.88	0.56	0.40	41,020
Political Scientists	0.77	0.87	0.53	0.39	5,580
News Analysts, Reporters, Journalists	0.81	0.81	0.56	0.39	45,020
Mathematicians	0.91	0.74	0.54	0.39	2,220
Technical Writers	0.83	0.88	0.57	0.38	47,970
Proofreaders and Copy Markers	0.91	0.86	0.49	0.38	5,490
Hosts and Hostesses	0.60	0.87	0.53	0.37	425,020
Editors	0.78	0.88	0.55	0.37	95,700
Business Teachers, Postsecondary	0.70	0.87	0.51	0.36	82,980
Public Relations Specialists	0.63	0.90	0.60	0.36	275,550
Demonstrators and Product Promoters	0.64	0.88	0.53	0.36	50,790
Advertising Sales Agents	0.66	0.90	0.53	0.36	108,100
New Accounts Clerks	0.72	0.87	0.51	0.36	41,180
Statistical Assistants	0.85	0.84	0.49	0.36	7,200
Counter and Rental Clerks	0.62	0.90	0.52	0.36	390,300
Data Scientists	0.77	0.86	0.51	0.36	192,710
Personal Financial Advisors	0.69	0.88	0.52	0.35	272,190
Archivists	0.66	0.88	0.49	0.35	7,150
Economics Teachers, Postsecondary	0.68	0.90	0.51	0.35	12,210
Web Developers	0.73	0.86	0.51	0.35	85,350
Management Analysts	0.68	0.90	0.54	0.35	838,140
Geographers	0.77	0.83	0.48	0.35	1,460
Models	0.64	0.89	0.53	0.35	3,090
Market Research Analysts	0.71	0.90	0.52	0.35	846,370
Public Safety Telecommunicators	0.66	0.88	0.53	0.35	97,820
Switchboard Operators	0.68	0.86	0.52	0.35	43,830
Library Science Teachers, Postsecondary	0.65	0.90	0.51	0.34	4,220

Note: Metrics reported as mean of user goal and AI action score.

Table 4: Bottom 40 occupations with lowest AI applicability score.

Job Title (Abbrev.)	Coverage	Cmpltn.	Scope	Score	Emp.
Phlebotomists	0.06	0.95	0.29	0.03	137,080
Nursing Assistants	0.07	0.85	0.34	0.03	1,351,760
Hazardous Materials Removal Workers	0.04	0.95	0.35	0.03	49,960
Helpers-Painters, Plasterers, ...	0.04	0.96	0.38	0.03	7,700
Embalmers	0.07	0.55	0.22	0.03	3,380
Plant and System Operators, All Other	0.05	0.93	0.38	0.03	15,370
Oral and Maxillofacial Surgeons	0.05	0.89	0.34	0.03	4,160
Automotive Glass Installers and Repairers	0.04	0.93	0.34	0.03	16,890
Ship Engineers	0.05	0.92	0.39	0.03	8,860
Tire Repairers and Changers	0.04	0.95	0.35	0.02	101,520
Prosthodontists	0.10	0.90	0.29	0.02	570
Helpers-Production Workers	0.04	0.93	0.36	0.02	181,810
Highway Maintenance Workers	0.03	0.96	0.32	0.02	150,860
Medical Equipment Preparers	0.04	0.96	0.31	0.02	66,790
Packaging and Filling Machine Op.	0.04	0.91	0.39	0.02	371,600
Machine Feeders and Offbearers	0.05	0.89	0.36	0.02	44,500
Dishwashers	0.03	0.92	0.39	0.01	463,940
Cement Masons and Concrete Finishers	0.03	0.92	0.39	0.01	203,560
Supervisors of Firefighters	0.04	0.94	0.28	0.01	84,120
Industrial Truck and Tractor Operators	0.03	0.94	0.28	0.01	778,920
Ophthalmic Medical Technicians	0.04	0.91	0.32	0.01	73,390
Massage Therapists	0.10	0.91	0.32	0.01	92,650
Surgical Assistants	0.02	0.78	0.32	0.01	18,780
Tire Builders	0.03	0.93	0.40	0.01	20,660
Helpers-Roofers	0.02	0.94	0.37	0.01	4,540
Gas Compressor and Gas Pumping Station Op.	0.01	0.96	0.47	0.01	4,400
Roofers	0.02	0.94	0.38	0.01	135,140
Roustabouts, Oil and Gas	0.01	0.95	0.39	0.01	43,830
Maid and Housekeeping Cleaners	0.02	0.84	0.34	0.01	836,230
Paving, Surfacing, and Tamping Equipment Op.	0.01	0.96	0.29	0.01	43,080
Logging Equipment Operators	0.01	0.95	0.66	0.01	23,720
Motorboat Operators	0.01	0.93	0.39	0.00	2,710
Orderlies	0.00	0.76	0.18	0.00	48,710
Floor Sanders and Finishers	0.00	0.94	0.34	0.00	5,070
Pile Driver Operators	0.00	0.98	0.24	0.00	3,010
Rail-Track Laying and Maintenance Equip. Op.	0.00	0.96	0.27	0.00	18,770
Foundry Mold and Coremakers	0.00	0.95	0.36	0.00	11,780
Water Treatment Plant and System Op.	0.00	0.92	0.44	0.00	120,710
Bridge and Lock Tenders	0.00	0.93	0.39	0.00	3,460
Dredge Operators	0.00	0.99	0.22	0.00	940

Note: Metrics reported as mean of user goal and AI action score.

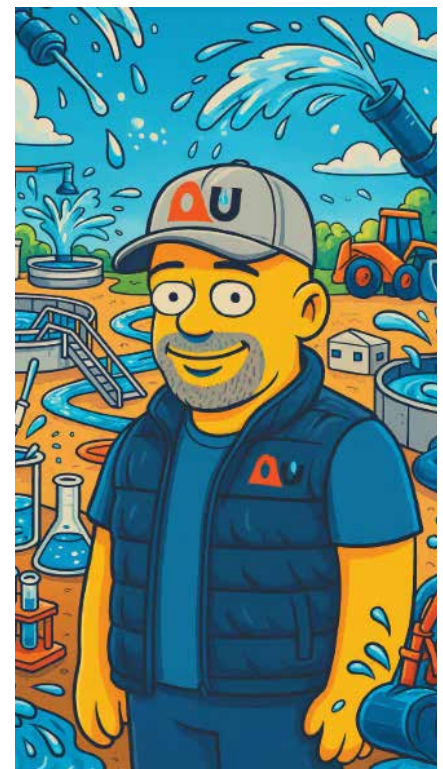
Jobs Most likely to be replaced by AI

Jobs Least likely to be replaced by AI

Let that sink in. (Pun intended.)  
 And speaking of pride in our industry, I couldn't be more excited about what's coming up at our Mid-Year Conference. For the first time ever, we'll be hosting our inaugural **"Shart Tank"** competition – a genius name and even better concept, courtesy of the ever-creative minds within our volunteer leadership team. This is your chance to pitch that brilliant (or bizarre) operational concept, improvement, or ideas you've been sitting on – and compete for the grand prize with real \$\$\$ attached. Whether you're presenting

or just cheering from the sidelines, it's going to be entertaining, enlightening, and uniquely *WEAU*.  
 In all seriousness, we are in the best industry on Earth – one that is essential, evolving, and absolutely irreplaceable. The camaraderie, innovation, and resilience I see across our members never ceases to amaze me. Thank you for all you do.  
 I look forward to seeing many of you soon. And remember: no matter what AI does... toilets still need flushing, systems still need monitoring, and people still need clean water.

Now for the obligatory AI-generated "Simpsonified" self-portrait: [Dix](#)



**“In all seriousness, we are in the best industry on Earth – one that is essential, evolving, and absolutely irreplaceable. The camaraderie, innovation, and resilience I see across our members never ceases to amaze me. Thank you for all you do.”**

# Useful Computer Programs to Learn for a Recent Engineering Graduate in the Wastewater/Water Industry

Wyatt Andersen

**H**ello *Digested News* Readers, Nearly seven years ago I entered a job as an entry level consulting engineer in Utah's wastewater and water industry. At the time, I had limited knowledge as to what computer programs I would be using daily and what computer programs would help me succeed in this industry. I wanted to take a moment to reflect on what I now perceive to be useful computer programs for a recent engineering graduate just entering the industry.

The following is a list I have compiled, and feel is worth sharing:

- **Microsoft Excel** – Whether you are working as a consultant in the private sector or working in the public sector, Excel is a tool that you will use on a weekly, if not daily, basis. As engineers, we deal with a lot of data and calculations, and Excel is a fundamental tool that excels in those functions.
- **ArcGIS Pro** – When I first started in the industry, ArcMap was the most widely used GIS platform. Only a couple of years later, ArcGIS Pro became the latest and most powerful GIS option. Transitioning

“ I wanted to take a moment to reflect on what I now perceive to be useful computer programs for a recent engineering graduate just entering the industry.

from ArcMap to ArcGIS Pro came with a learning curve but it has been well worth it. This GIS program is highly useful for design projects as well as planning projects.

- **Autodesk Civil 3D** – Some engineering consulting firms have a separate drafting department, while others like to have entry level engineers learn how to draft for their own design projects. The most common drafting program is Civil 3D, so I recommend that entry level engineers become very familiar with this computer program.
- **HEC-RAS/HMS** – The HEC programs are useful tools for hydraulics and hydrology in storm water projects. They can be applied to both storm water design projects and planning projects.

**Autodesk Infoworks ICM or Aquanuity AquaTwin Sewer** –

When I first entered the industry, Innovyze's InfoSWMM was the primary software I used the most for sewer collection system hydraulic modeling. The times have changed in the past year or so and now the two most common computer programs for this function are Autodesk's Infoworks ICM or Aquanuity's AquaTwin Sewer. Our company has been leaning towards AquaTwin Sewer because the capabilities are very similar to InfoSWMM.

Hopefully these tips and insights are useful to recent graduates that are finding their way through the water and wastewater industry. [Dn](#)

## Loyalty at Lakeside as Dan Widdel becomes new President

Dan Widdel has become the new President of Illinois-based Lakeside Equipment Corporation, who since their formation back in 1928, have become a highly renowned provider of wastewater treatment systems, including screens, grit collectors, clarifiers, screw pumps, and biological processes.

With Lakeside for 25 years, Dan steps up to replace retiring President, Karen Wolk, who served the employee-owned company for 40 years. Karen had been in the head role for the past three years, following the sudden passing away of Lakeside's much-admired President, Steve Eckstein.

"This is a huge honour for me to follow in the footsteps of those who have led Lakeside Equipment Corporation so diligently for almost a century," said Dan Widdel.

"Despite some challenging times in our long history, including the Pandemic, and the tragic loss of our former President, we have stuck together as a very solid team, determined, no matter what, to deliver the very best solutions for our customers. I would like to sincerely thank Karen Wolk for her huge contribution in pushing Lakeside forward".

Jim Snyder (Lakeside's Production Manager), who has been with the business for 43 years, moves up to become joint Vice President, sharing the new mantle with Jim McKee (National Sales Manager), who has been at Lakeside for 25 years.

Meanwhile, Jamie Marshall has joined Lakeside as its new Controller. She recently completed her Master of Business Administration, together with achieving a human resources graduate certificate.



Cleaner Water for a Brighter Future®

# YOUR TRUSTED PARTNER



## WORKING HARD 24/7

Introducing the MevaScreen® RSM Monster! Our progressive step fine screen works in facilities with extreme grit or high screening loads in difficult operating conditions. The new screen's patented process provides ease of maintenance and can be tailored to the facility's specific application needs. With a greater than 80% debris removal rate, it's an excellent choice to protect sites with high solids removal requirements.



# Collections Quiz

By Dan Olson

1. **A tanker truck was involved in an accident a few miles upstream from the treatment plant. Storm water inlets to the combined wastewater collection system are receiving a large quantity of an unknown chemical. What is the first action that would be taken?**
  - A. Determine type of chemical from shipper
  - B. Evacuate all homes in the vicinity of the sewer
  - C. Immediately instruct treatment plant to start bypassing wastewater
  - D. Warn downstream treatment plant
2. **A three phase 480 V AC pump motor draws 27 amps. What is the horsepower output of the motor if the power factor is .77 and the pump efficiency is 81%?**
  - A. 10.84 HP
  - B. 14.07 HP
  - C. 13.38 HP
  - D. 18.75 HP
3. **What is the greatest distance at which manholes should be installed for an 8-inch sewer line?**
  - A. 200 FEET
  - B. 300 FEET
  - C. 400 FEET
  - D. 500 FEET
4. **“Hz” stands for**
  - A. Cycles per second
  - B. Hand control
  - C. Horizontal phase
  - D. Polyphase
5. **Which of the following are reasonable or valid objectives of a cost accounting program for a wastewater utility?**
  - A. Identify methods or measures for controlling increases in operating costs
  - B. Provide data for budget development and preparation
  - C. Provide data that helps in making decisions about making repairs verses replacement of equipment
  - D. All of the above
6. **A pump has an efficiency of 80% and a motor has a power factor of .91, If the water horsepower is 213 HP and electricity has a cost of 12.3 cents per KWH, how much will it cost to run the pump for one month (30 days) at 11.5 hrs./day?**
  - A. \$9,262.14
  - B. \$7,409.71
  - C. \$1,907.29
  - D. \$4,975.53
7. **Ideally, the pH meter should be standardized**
  - A. Before each use
  - B. Weekly
  - C. Monthly
  - D. Once
8. **An automatic chemical feeder treats 67 MGD at a concentration of 73 mg/l. How many lbs/day of chemical is required?**
  - A. 5,453 lbs/day
  - B. 36,585 lbs/day
  - C. 40,791 lbs/day
  - D. 4,387 lbs/day
9. **Which of the following would be the safest action to take in the event of a major chlorine container leak?**
  - A. Call the fire department to hose down the container
  - B. Notify the local police or sheriff
  - C. Roll the container so that liquid, rather than gas escapes
  - D. Submerge the container in a basin or stream if feasible
10. **Emergency stoppages in pipelines may be cleared safely by use of**
  - A. Bar screens
  - B. High velocity cleaners
  - C. TV cameras
  - D. All of the above **DTI**

## Answers

1. A, 2. D, 3. D, 4. A, 5. D, 6. A, 7. A, 8. C, 9. B, 10. B

*Bringing you the best manufacturers in the industry*



Wastewater &  
Water Treatment  
Specialists



For a full line card scan the QR code

720-450-2523

www.ambienteh2o.com

# building Utah.

PROVO RIVER WATER TREATMENT FACILITY



## Construction Excellence in Water and Wastewater

WASTEWATER TREATMENT  
BOOSTER PUMP STATIONS  
WATER RECLAMATION  
WATER RESERVOIRS  
WATER TREATMENT  
ARSENIC REMOVAL  
ODOR CONTROL  
WELL DRILLING  
LIFT STATIONS  
DISINFECTION

**MGCCONTRACTORS.COM | 801.739.6948**  
2975 W EXECUTIVE PKWY, SUITE 120 . LEHI, UTAH 84042



# Maintenance Quiz

By James Magill

- Which equipment is typically inspected during routine digester maintenance?**
  - Aeration tanks
  - Primary clarifier
  - Mixing system and gas collection system
  - Sand filters
- What is the recommended action if a digester becomes over-acidified?**
  - Increase the feed rate
  - Add alkali (e.g., sodium bicarbonate)
  - Decrease temperature
  - Introduce more sludge
- Which of the following is a common sign that a digester needs maintenance?**
  - Increase in pH
  - Constant temperature
  - Decrease in gas production
  - Decrease in sludge level
- What is the main purpose of maintaining bar screens at the headworks?**
  - To increase the flow velocity
  - To prevent clogging of downstream equipment
  - To remove chemical contaminants
  - To enhance odor control
- How often should mechanical screens typically be inspected and cleaned?**
  - Once per year
  - Once every 6 months
  - Daily or continuously, depending on design
  - Only after a storm event
- What common problem can arise in a poorly maintained grit removal system?**
  - Increased pH
  - Damage to pumps due to abrasive particles
  - Sudden drop in temperature
  - Decrease in nitrogen levels
- Which of the following is a sign that headworks equipment requires immediate maintenance?**
  - Clear and odorless influent
  - Sudden increase in upstream water level
  - Decrease in sludge volume
  - Lower ambient temperature
- What is a common reason for reduced flow in a positive displacement pump?**
  - Too much suction lift
  - Cavitation
  - Internal wear or leakage
  - High discharge pressure
- Which component of a positive displacement pump requires regular lubrication to prevent failure?**
  - Impeller
  - Shaft seal
  - Bearings
  - Volute casing
- Why is it important to check for abnormal noise or vibration during pump operation?**
  - It indicates efficient performance
  - It suggests the pump is cavitating
  - It is normal in high-speed pumps
  - It helps boost flow rate
- Which of the following components should be regularly inspected for wear and damage on an overhead crane?**
  - Control panel background color
  - Load hook and wire ropes
  - Operator's seat
  - Concrete floor under the crane
- What does excessive wear on a crane's wire rope typically indicate?**
  - Underuse of the crane
  - Proper tension and load handling
  - Overloading or misalignment during lifting
  - Balanced load distribution [BN](#)

## Answers

1. C, 2. B, 3. C, 4. B, 5. C, 6. B, 7. B, 8. C, 9. C, 10. B, 11. B, 12. B



# INTEGRITY INSPECTION SOLUTIONS, INC.



At Integrity Inspection Solutions we believe it is best to do everything with Integrity and the highest ethical standards. Locally owned and operated, we are dedicated to providing the best solutions to private firms and municipalities in Idaho and surrounding states.

**Services offered:**

- CCTV Inspection (NASSCO Certified)
- Lateral Launch Inspection
- Hydro Cleaning
- Root Cutting
- Hydro Excavation
- CIPP Point Repair
- Infiltration Repair
- Manhole Coatings

**Discover the Integrity Advantage:**

UV CIPP Installation: Seamlessly repair and strengthen pipelines with cutting-edge UV Cured-In-Place Pipe technology.  
Schwalm Robotics: Precision robotic cutting to remove obstacles, ensuring optimal pipeline performance.

**Contact us:**

(208) 442-4470 – Office  
(208) 960-2883 – Richard Mason, President  
24/7 Emergency Line:  
(208) 960-2729 – Keysha Hadley, Director of Operations and Project Management  
John Raymond, Outside Sales: 208-941-1733  
Email: integrity@iispipeline.com



[www.iispipeline.com](http://www.iispipeline.com)

# PWO Summer Report

As the summer months are coming to an end, we reflect on the opportunities we've had to learn, connect, and unwind alongside colleagues. Two standout events this season included the Pump Training Class held in May at the Jordan Basin facility and the always popular Annual Golf Tournament at Thanksgiving Point.

First off, I just want to give a big thanks to everyone who showed up for the Pump Training Class in May and the PWO Golf Tournament at Thanksgiving Point. It was great to see such a strong turnout at both events, and we really appreciate everyone taking the time to participate. Whether you were there to learn something new, connect with others, or just enjoy a day out on the course, your involvement helped make both events a big success. Thanks again for being part of it!

We are also excited to share some great news: this year, we have the chance to send not just two, but **three** teams to represent us at WEFTEC in Chicago – and of course, we jumped at the opportunity. Heading to the competition will be our Central Valley team, our South Valley team, and the Wasatch All-Stars. We're proud of each group and can't wait to cheer them on this October!



If you'll be at WEFTEC this year, make some time to cheer on our teams and show them your support – every bit of encouragement helps! Be on the lookout for a schedule to be posted on the WEAU website. Once again, thank you to all of you for allowing this to happen! [👉](#)

**GO ABOVE.**

**EVERLAST™**  
Wet Well Mounted Pump Stations

Go Above the Wet Well with the #1 Pump Station for O&M Ease and Safety, Pump Longevity, and Lowest Life-Cycle Costs

See How to Easily Switch from Submersibles!

Eliminate Confined Space Hassles Forever!

Represented in Utah by:

**WATERFORD SYSTEMS**

801-463-9900  
jeff.waterford@gmail.com

**S&L**  
Smith & Loveless Inc.

# Operator Spotlight: Cory Zeman


**C**ory Zeman has spent the last 17 years working at South Valley Water Reclamation Facility, where he's currently a Mechanic 3. Over the years, he's known for being hardworking, dependable, and someone who can tackle just about anything. Before getting into wastewater, Cory spent three years working in the oil fields—an experience that gave him a solid foundation in hands-on mechanical work.

He's always been a “jack of all trades,” someone who enjoys taking on different types of work, whether it's HVAC, pump maintenance, or anything else in this field. Cory holds certifications in both maintenance and wastewater. And thrives on the variety and daily challenges the job brings.

Cory has also been involved in Operations Challenge for the past six years. Last year he was on the Wasatch All Stars team that competed at nationals and will be competing again this year in Chicago with South Valley WRF (let's bring home some hardware).

Outside of work, he enjoys outdoors as an avid archery hunter. Spends time riding side-by-sides, four-wheeler and motocross bikes. But above all, he's a family man. Cory has been happily married for 20 years and is a proud father of five and grandfather of two. He especially enjoys his role as a grandfather and cherishes every moment he gets to spend with his grandkids. [Dn](#)






**BOWEN COLLINS & ASSOCIATES**


- Water
- Wastewater
- Water Resources
- Natural Resources
- Civil Engineering
- Electrical Engineering
- Structural Engineering
- SCADA
- Studies/Master Planning
- GIS Mapping
- Construction Management
- Environmental



SALT LAKE CITY  
(801) 495-2224



OGDEN  
(801) 495-2224




ST. GEORGE  
(435) 656-3299

BOISE  
(208) 939-9561

[WWW.BOWENCOLLINS.COM](http://WWW.BOWENCOLLINS.COM)

# Treatment Certification Quiz

- Fixed-film processes don't typically remove blank beyond assimilative uptake.**
  - Bod
  - TSS
  - Nitrogen
  - Phosphorus
- Microorganisms in this portion of the biofilm have the greatest access to resources and will grow the fastest.**
  - Outermost layer
  - Anoxic layer
  - Anaerobic layer
  - Media surface
- This device is used to level the distributor arms of a trickling filter.**
  - Stanchion
  - Turnbuckle
  - Shims
  - Dump gate
- The open space below the underdrain system in a plastic media trickling filter is called the:**
  - Channel
  - Ventilator
  - Stanchion
  - Plenum
- Most hydraulically driven rotary distributors on trickling filters rotate at this rate:**
  - 1 rpm
  - 3 rpm
  - 5 rpm
  - 10 rpm
- The following is a major design parameter for settling tanks:**
  - Overflow rate
  - Alkalinity
  - Sludge wasting rate
  - Coagulant concentration
- When poor floc formation is observed, what should be done to determine if is due to inadequate chemical dosing?**
  - Run a jar test
  - A timed cone settling test
  - Alkalinity and pH measurement
  - Sludge density test
- Granular activated carbon is regenerated through what mechanism?**
  - Heat
  - Lime slurry
  - Digestion
  - Replacement
- An anionic exchanger transfers what type of ion?**
  - Positive
  - Negative
  - Neutral
  - Double
- When a membrane system replaces the secondary clarifier in an activated sludge process, the resulting process is called?**
  - Microfiltration
  - Membrane bioreactor
  - Reverse Osmosis
  - Wastewater recycling 

**Answers**  
1-D, 2-A, 3-B, 4-D, 5-A, 6-A, 7-A, 8-A, 9-B, 10-B





# INTEGRITY INSPECTION SOLUTIONS, INC.

*"Together, We Are the Solution"*

## Doing Business with Integrity

### ***New Services Offered by Integrity Inspection Solutions: UV CIPP Installation and Schwalm Robotics***

**1. UV CIPP Installation:** Integrity Inspection Solutions is excited to announce the addition of UV CIPP (Ultraviolet Cured-In-Place Pipe) installation to our comprehensive lineup of trenchless pipeline solutions. UV CIPP is a cutting-edge technology that allows for the rehabilitation of pipelines without the need for traditional excavation. With this service, we can efficiently repair and reinforce sewer lines, stormwater pipes, and other underground conduits, ensuring structural integrity and longevity. The UV CIPP process involves inserting a resin-soaked liner into the existing pipe, which is then cured in place using ultraviolet light. This results in a seamless and durable pipe-within-a-pipe, minimizing disruption to the surrounding environment and reducing project timelines. Our expert team is ready to deliver top-notch UV CIPP installation services tailored to your specific project needs.

**2. Schwalm Robotics:** In our continuous pursuit of cutting-edge solutions, Integrity Inspection Solutions is proud to introduce Schwalm Robotics to our suite of services. Schwalm Robotics represents the forefront of robotic technology for pipeline maintenance and rehabilitation. Equipped with advanced cutting capabilities, Schwalm Robotics allows us to precisely and efficiently remove obstacles, protrusions, or unwanted materials from pipelines. This technology is particularly useful in addressing challenges such as roots, intruding taps, or other impediments that may compromise pipeline functionality. By leveraging Schwalm Robotics, we enhance the accuracy and effectiveness of our pipeline maintenance services, ensuring a thorough and reliable solution for our clients. Trust Integrity Inspection Solutions for state-of-the-art robotic pipeline services designed to meet the evolving needs of the industry.

### ***Integrity Inspection Solutions: Your Pipeline Solutions Partner***

Locally owned and operated, Integrity Inspection Solutions stands committed to excellence, offering top-notch solutions to private firms and municipalities in Idaho and surrounding states.

### ***Our Services:***

- **CCTV Inspection (NASSCO Certified)**
- **Lateral Launch Inspection**
- **Hydro Cleaning & Root Cutting**
- **Hydro Excavation**
- **CIPP Point Repair**
- **Infiltration Repair**
- **Manhole Coatings**

**Why Choose Us?** With Integrity at our core, we bring you the highest ethical standards in the industry. Our certified team ensures precision and reliability in every project.

### ***Discover the Integrity Advantage:***

- **UV CIPP Installation:** Seamlessly repair and strengthen pipelines with cutting-edge UV Cured-In-Place Pipe technology.
- **Schwalm Robotics:** Precision robotic cutting to remove obstacles, ensuring optimal pipeline performance.

### ***Contact Us:***

- **Office:** (208) 442-4470
- **Richard Mason, President/Owner:** (208) 960-2883
- **24/7 Emergency Line:** (208) 960-2729 –  
Keysha Hadley, Director of Operations and Project Management
- **John Raymond, Outside Sales:** 208-941-1733
- **Email:** integrity@iispipeline.com

**Experience Integrity, Experience Excellence!**

**www.iispipeline.com**

# 2025 WEAU Young Professionals Summit

**Y**oung Professionals, registration is now open for the 2025 YP Summit! This year we have decided to make the summit a full day of modules with interactive learning, soft skills, and plenty of opportunities to connect with other YPs and WEAU Members.

**EVENT DETAILS:**

Thursday, November 6, 2025  
Uintah Training Room – Jordan Basin  
8:30 AM – 4:30 PM

**AGENDA:**

- MODULE 1** – Elevating Teams
- MODULE 2** – Evolving Communication
- LUNCH AND RAFFLE**
- MODULE 3** – Operations Circuit Challenge
- MODULE 4** – YP Power Hour
- MODULE 5** – Accountability and Ownership

**REGISTRATION IS NOW OPEN!**

Registration and event details can be found by following the QR linked here.



**YP POWER HOUR - Now Accepting Abstracts!**

The YP Summit Committee invites all WEAU YPs and water young professionals to consider presenting at the new **YP Power Hour** at this year's WEAU YP Summit! **Aligning with this year's summit theme, "Elevate & Evolve," we are asking YPs to share an experience where they elevated and/or evolved, whether it be about a project experience, career path journey, or personal story.** We encourage you to take this opportunity to share something you are passionate about with your fellow YPs.

There are five presentation slots available. We ask that your presentation be between 8-10 minutes. This is a great opportunity to practice your presentation skills in front of your peers and colleagues without having to prepare a full conference presentation of 30+ minutes. **All YP presenters will receive a \$20 gift card!**

**Submissions are due by October 3, 2025.**

We will contact you by October 10 to let you know if you will be presenting. If you have any questions, please email [yp@weau.org](mailto:yp@weau.org).



Where do you find Carollo  
**Innovation?**

- In our culture
- In our solutions
- In our communities

For over 90 years, Carollo has pioneered breakthroughs in water technology – from resilient infrastructure to safeguarding public health and ecosystems. All with a single purpose: shaping a future where water enriches every community it touches.

Salt Lake City / 801.233.2500

**NICOP** | NICKERSON COMPANY

**Celebrating 100 Years of Pump Sales and Service**

**Nicopumps.com 1-800-584-6793**

# YP Summer Activities



YPs Tour Snyderville Basin's East Canyon WRF



YPs at WEFMAX in Palm Springs

**TWIN "D" Inc.**



**Layton, Utah**



CCTV VIDEO INSPECTION LATERAL  
HYDRO EXCAVATING  
LINING POINT REPAIRS  
ACOUSTIC TESTING  
TAP CUTTING  
ROOT REMOVAL  
LATERAL LAUNCH / LOCATING  
AIR/DEFLECTION TESTING  
SCHWALM ROBOT CUTTING  
PIPE CLEANING  
VACUUMING  
ROTATIONAL MAINTENANCE PLANS

**801-771-3038**  
**[www.twind.net](http://www.twind.net)**



# YP Summer Activities



YPs Joint WEAU/AW WA Pickleball Social at Second Summit Cider Co.



YPs August Kickball Social

## Seeing engineering from a service PERSPECTIVE

“My military background provides the perspective of working for a common goal, working as a team with my clients, and creating solutions that truly serve our communities.”

*Sam Fankhauser, PE  
AE2S Engineer*



Water Engineering and Beyond

*Award-Winning Best Place to Work*





[www HidrostalPumps.com](http://www.HidrostalPumps.com)



# Self Cleaning Wet-Well System

# Prerostal



Proudly represented by:



[WWW.DSESLC.COM](http://WWW.DSESLC.COM) . 2441 South 3850 West . West Valley City, Utah . 84120 . 801-977-9200



# CHASING THE INVISIBLE:

## THE QUEST TO IMPROVE SAFETY AND AIR QUALITY

Trung Le, PE, Brown and Caldwell

Over the past several decades, municipal wastewater treatment plants have evolved from their traditional roles of safeguarding public health and environmental quality to becoming hubs for resource recovery. Now more commonly referred to as water resource recovery facilities (WRRF), many of these facilities have implemented bioenergy programs centered around anaerobic digestion, the beneficial use of biogas, and maximizing biogas production through co-digestion of organic waste. Such initiatives offer pathways for cost savings or revenue generation, improve resiliency, and promote climate-positive actions.

Despite the substantial advantages of bioenergy programs, they can also be an unsuspecting major source of greenhouse gas (GHG) emissions. Fugitive methane – an unintended release typically originating from anaerobic digestion and solids handling systems – often represents one of the largest sources of GHG emissions at WRRFs, alongside energy consumption and process-related nitrous oxide emissions. Methane is a major contributor to climate change, accounting for 45 percent of current net warming (EPA, 2025). WRRFs are estimated to contribute 5-8% of global anthropogenic methane. Beyond its climate impact, methane

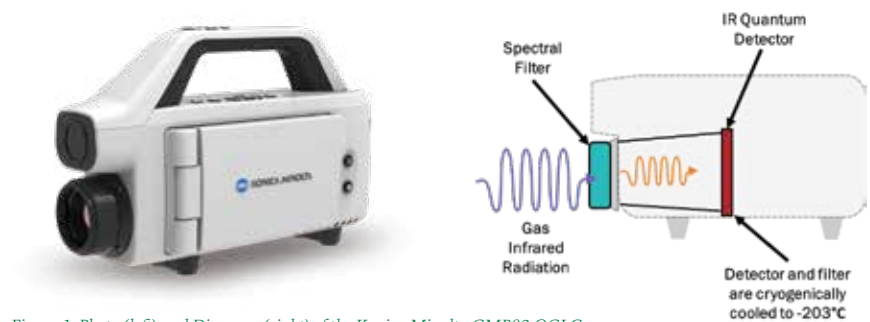


Figure 1. Photo (left) and Diagram (right) of the Konica Minolta GMP02 OGI Camera

release results in nuisance odors that can impact both the surrounding community and plant staff, accelerate the degradation of equipment, and create major safety concerns.

To tackle these issues, other sectors have implemented programs called leak detection and repair (LDAR). LDAR is the systematic, periodic, and intentional inspection of facilities using leak detection technologies. Identified leaks are then scheduled for repair, and follow-up inspections can be used for validation. LDAR programs were first developed in the oil and gas sector in the early 1970s and were predominantly driven by safety and air quality protection through the reduction of volatile organic compounds and volatile hazardous air pollutants. Leak detection methods include audio, visual,

and olfactory (AVO) inspections, portable monitoring instruments, stationary monitoring, or handheld optical gas imaging (OGI) cameras. LDAR programs often employ a tiered approach that combines rapid, high-frequency leak detection methods with less frequent but more comprehensive methods for follow-up surveys.

LDAR programs and new detection technologies provide significant opportunities at WRRFs where a vast majority of WRRFs do not deploy regular leak detection as part of routine maintenance or are reliant on rudimentary leak detection methods. The adoption of LDAR programs can provide a means to substantially reduce emissions while addressing odors, safety, asset renewal, and other benefits.

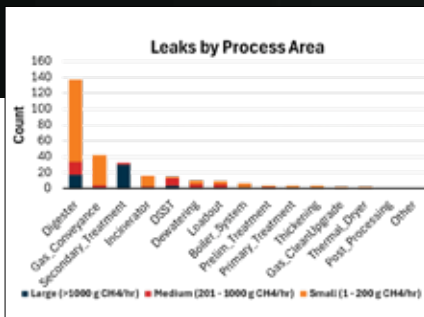


Figure 2. Leaks by Process Area as Reported by Brown and Caldwell Fugitive Methane Taskforce

## A New Tool to Champion Detection and Safety

OGI has become the de facto best handheld leak detection tool in the oil and gas sector for its high sensitivity, user friendliness, and rapid deploy-ability. Its translation into the wastewater sector has proven highly effective, filling a much-needed gap for WRRFs. One company that has helped to support the adoption of leak detection in the wastewater sector is Konica Minolta, the maker of the GMP02 OGI camera (Figure 1). Their willingness to collaborate with the industry and adapt their tools and software has allowed the GMP02 camera model to be well suited for wastewater. Many OGI cameras that we have tested are not well tuned to wastewater applications due to limited understanding of the type of gases and quantities generated at treatment plants. The GMP02 OGI camera is a light weight and portable device that includes features like general quantification, multiple imaging modes, and image stabilization that help to make detection and prioritization of leak repair easier. Like other OGI technologies, the camera relies on thermal imaging spectrometry to isolate gases that are invisible to the human eye by detecting changes in infrared radiation that passes through the gases.

## A Review of 3 Years of LDAR Surveys

Over the past 3 years, the Brown and Caldwell Fugitive Methane Taskforce used a Konica Minolta GMP02 OGI camera to conduct fugitive methane leak detection surveys at 18 treatment plants and logged over 272 hours of OGI field hours. The most common sources of emissions included pressure vacuum release valves (PVRV), floating covers, digester cover safety appurtenances, biogas compressors, biogas condensate and drip traps, and dewatering foul air. However, not all emissions were found from anaerobic digestion systems; many leaks were found at dryer and incinerators that use natural gas (Figure 2).

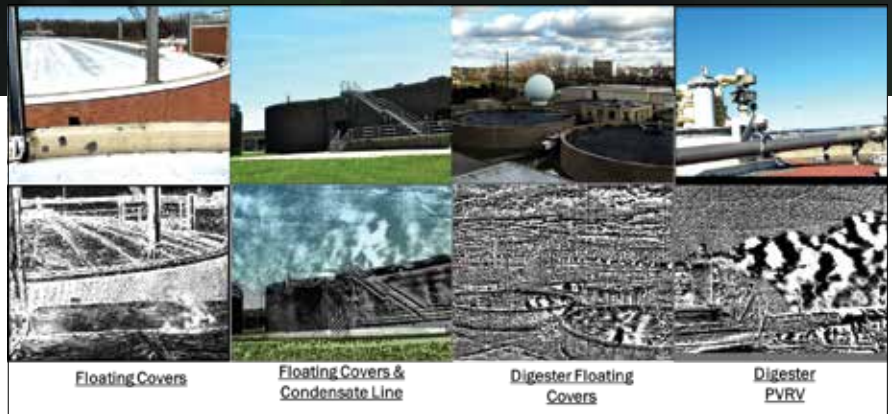


Figure 3. Methane emissions from various parts of a digestion system

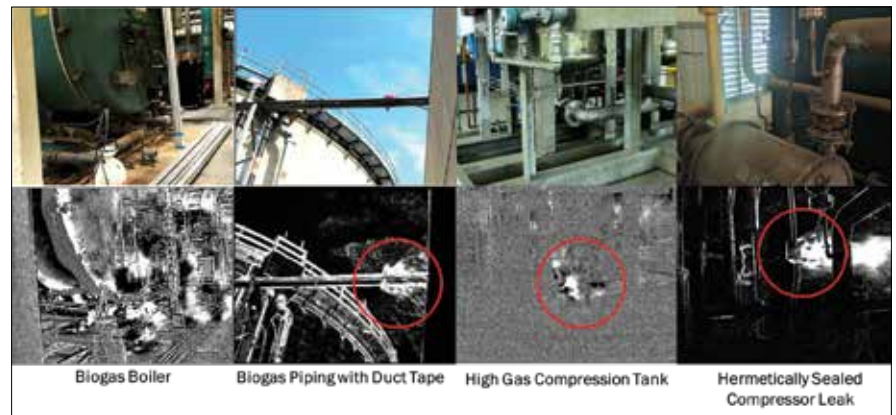


Figure 4. Methane emissions from various biogas handling and use equipment



Figure 5. Methane emissions from other sources

Figures 3 through 5 above show the various locations where leaks were captured for the results shown in Figure 2 above. The top image typically shows the visual while the bottom is the thermographic image of emissions.

During the course of the surveys, leaks were often corrected by plant staff and resurveyed to verify mitigation. The ability to localize and visualize leaks was a

powerful tool to communicate to operators and maintenance staff the safety concerns and equipment conditions. The application of OGI and other tools as part of voluntary LDAR programs can play a vital role in ensuring the safety and health of plant staff, reducing emissions and odors, and lead to considerable cost savings by preventing the loss of biogas that would otherwise be utilized on-site or sold to the grid. [ENR](#)



# 2025 MID-YEAR CONFERENCE PREVIEW

November 18, 2025 | 8:00am to 4:00pm  
Utah Cultural Celebration Center in West Valley City, UT.

## JOIN US AT THE MID-YEAR CONFERENCE

**T**he Mid-Year Conference is just around the corner, and it is an event you do not want to miss! Whether you are a seasoned expert in your field or only starting your journey, the conference has something valuable to offer for everyone. Our Mid-Year Conference is packed with informative sessions and engaging discussions on all topics wastewater. You will leave with actionable takeaways and new connections that will propel your career forward.

The 2025 Mid-Year conference will be held on Tuesday, November 18th from 8:00 AM to 4:00 PM at the Utah Cultural Celebration Center in West Valley City, UT. The technical program will include session for managers, operators, collections, board members, engineers, students, and any others interested in the water and wastewater in Utah.

The Water Environment Association of Utah is dedicated to the professional growth of its members and the preservation and enhancement of the water environment.

### TICKETS

\$135.00 Member Registration  
\$100.00 Earlybird rate before November 1st

\$220.00 Guest Registration  
\$165.00 Earlybird rate before November 1st

\$0.00 Student Registration

### CONTINUING EDUCATION

Are you a certified operator in need of continuing education units? You can earn up to 0.5 CEU by attending the WEAU Midyear Conference.

Are you a professional engineer? It is required that you complete a minimum of 30 hours of professional continuing education within a two-year renewal cycle. The time you spend in sessions at the conference counts toward your continuing education requirement.

### MID-YEAR YP SUMMIT

The third annual WEAU Mid-Year YP Summit will be held prior to the Mid-Year Conference on Thursday, November 6th. Visit the YP Summit event page for additional information. [▶](#)

**WE LOOK  
FORWARD TO  
SEEING YOU  
THERE!**

# CONFERENCE TECHNICAL PROGRAM

TIME	PLAZABALLROOMA	PLAZABALLROOMB	PLAZABALLROOMC	SUITEC
8:00-8:30	<b>REGISTRATION AND CONTINENTAL BREAKFAST</b>			
<b>Topic</b>	<b>PROJECT DELIVERY</b>	<b>WASTEWATER FACILITIES</b>	<b>UTILITY MANAGEMENT</b>	<b>SHART TANK</b>
<b>8:30-9:10</b>	Procurement Possibilities and Potholes	UV Disinfection 101 – Theory and Application of UV Disinfection for Wastewater Treatment	Community – Driven Planning: A Blueprint for Holistic and Durable Utility Strategies	TBD
	Logan Murphy – Ash Creek SSD	Archana Dahal – J-U-B Engineers	Matthew Gregg – Brown and Caldwell	
<b>Topic</b>	<b>PROJECT DELIVERY</b>	<b>WASTEWATER FACILITIES</b>	<b>UTILITY MANAGEMENT</b>	
<b>9:20-10:00</b>	Achieving the Best Life Cycle Value of MBR Equipment with Procurement	Activated Sludge Densification 101: How to Improve Settability and Save Footprint	Fundamentals of Negotiation	
	Jessica Cooper – AE2S	Rick Kelly – Brown and Caldwell	Mike Chandler – Ash Creek SSD	
10:00-10:20	<b>BREAK</b>			
<b>Topic</b>	<b>PROJECT DELIVERY</b>	<b>WASTEWATER FACILITIES</b>	<b>UTILITY MANAGEMENT</b>	<b>SHART TANK</b>
<b>10:20-11:00</b>	Construction Mangement Best Practices in the Wastewater Industry	Squeezing the Life Out of Sidestream	Navigating PFAS in Wastewater & Biosolids with Evolving Regulations	TBD
	Nicholas Griffith – AECOM	Sam Grimes – TSSD & Jade Echard – Carollo	Kelsey Wagner – AE2S	
<b>Topic</b>	<b>PROJECT DELIVERY</b>	<b>WASTEWATER FACILITIES</b>	<b>UTILITY MANAGEMENT</b>	
<b>11:10-11:50</b>	TSSD WRF Improvements – Innovative Design and Construction Update	Energy Efficiency in Wastewater Treatment: Lessons from Salt Lake City's Water Reclamation Facility	One Water in the West – Practical Steps to Success	
	Susan Spore – Brown and Caldwell	Grant Davies – AECOM	Jason Mitchel Graham – Stantec	
12:00-1:20	<b>LUNCH</b>			
<b>Topic</b>	<b>PROJECT DELIVERY</b>	<b>WASTEWATER FACILITIES</b>	<b>RESIDUALS &amp; BIOSOLIDS</b>	<b>OPERATIONS</b>
<b>1:30-2:10</b>	Trenchless Technologies (Pipes and Tunnels)	All you need to know about the selection of odor control chemistries and their impacts on the WWTPs	Balancing Risk and Innovation: Planning for Biosolids Management in Uncertain Times	Blown Away: Large Capacity Blower Startup Lessons Learned
	Jordan Pugmire – J-U-B Engineers	Roderick Abinet – Penco	Terry Goss – AECOM	Brady Adams – CVWRF
<b>Topic</b>	<b>RECLAMATION AND REUSE</b>	<b>WASTEWATER FACILITIES</b>	<b>RESIDUALS &amp; BIOSOLIDS</b>	<b>ASSET MANAGEMENT</b>
<b>2:20-3:00</b>	Planning for Potable Reuse in a No-Rules Landscape: Strategies to Stay Ahead	ECWRF Dewatering Retrofit	Removal of PFAS from biosolids using several technologies – data, regulations, and the future	How to Integrate Valve Inspections with Pipeline Inspections for a Win-Win
	Tess Laffer – AECOM	Chad Burrell – SBWRD & Erin Andersen	Todd Williams – Jacobs	Britt Klein – Xylem
3:00-3:20	<b>BREAK</b>			
<b>Topic</b>	<b>RECLAMATION AND REUSE</b>	<b>MISCELLANEOUS</b>	<b>MISCELLANEOUS</b>	<b>STUDENT PRESENTATION</b>
<b>3:20-4:00</b>	Operation and performance of the Nampa WRF: tertiary filtration, struvite mitigation, EBPR, and water reuse.	Design considerations for selecting a method to accommodate in-service piping movement	Electrical 101	TBD
	William Leaf – Jacobs	Kory Farthing – Victaulic	Chris Thunhorst – Hazen and Sawyer	



# Your Trusted Partner

## Build America, Buy America

You need equipment that works and works within the rules. Sulzer's XFP submersible sewage pumps deliver clog-resistant performance and long-term reliability, all while meeting full Build America, Buy America (BABA) compliance.

That means peace of mind for your operations and access to funding your project relies on, without compromising performance.

We don't just meet standards. We help you move forward with confidence.

Built here. Built to last. Built for you.

Learn more about Sulzer's BABA  
[go.sulzer.com/trusted-baba](https://go.sulzer.com/trusted-baba)





# THE AWARDS ARE COMING, THE AWARDS ARE COMING!

**NOMINATIONS DUE  
FRIDAY, DECEMBER 18, 2025.**

## **OUTSTANDING PLANT/ SYSTEM AWARDS**

Treatment Plant – Under 5 MGD

Treatment Plant – Over 5 MGD

Lagoon - Discharging

Lagoon – Non Discharging

Laboratory

Collections System – Under 5 MGD

Collections System – Over 5 MGD

## **OUTSTANDING PROGRAM AWARDS**

Pretreatment Program

Biosolids Program

Safety Program

## **OUTSTANDING INDIVIDUALS AWARDS**

Treatment Plant Operator – Under 5 MGD

Treatment Plant Operator – Over 5 MGD

Collections System Operator – Over 5 MGD

Collections System Operator – Under 5 MGD

Supervisor – Under 5 MGD

Supervisor – Over 5 MGD

Pretreatment Specialist

Maintenance Specialist

Laboratory Technician

Young Professional

IT Specialist

**NOMINATE  
TODAY!!**

## **FORMS AVAILABLE ONLINE**

at [www.weau.org](http://www.weau.org) or from the WEAU  
Awards Committee.

## **FOR MORE INFORMATION CONTACT**

Spencer Parkinson at 801-244-3901  
Or by email [awardsweau@gmail.com](mailto:awardsweau@gmail.com)

**THANK YOU!**

If you have an idea for a special award, please contact us! 



## GIVING AND RECEIVING FEEDBACK:

### EMBRACING BLIND SPOTS AND OVERCOMING LEARNED HELPLESSNESS

One of my biggest fears when I entered the corporate world (and is still very high on the list of fears) was doing something incorrectly or “wrong” and no one telling me. Unfortunately, this fear came true a couple of years ago when year-end reviews rolled around and I was blindsided by negative feedback that was half a year old and had never been brought to my attention.

Feedback is a cornerstone of personal and professional growth but can be tricky to both give and receive. When done well and with empathy, feedback fosters trust, sharpens performance, and builds stronger relationships. However, without careful attention to how feedback is delivered, it can trigger defensiveness, reinforce blind spots, or even contribute to learned helplessness. Understanding blind spots, learned helplessness and how giving feedback can either help or hinder growth in both these areas can transform how we engage in feedback conversations.

#### **Empathy: The Foundation of Effective Feedback**

Empathy is the ability to understand and share the feelings of another individual or, as many of us have learned, placing ourselves in another’s shoes. In feedback conversations, empathy means recognizing the emotional impact of our words and approaching others with kindness and respect.

When giving feedback, empathetic language can make a significant difference. Instead of saying, “You always miss deadlines,” try, “I’ve noticed a few deadlines have been tough to meet. What’s been getting in the way?” This approach invites conversation and problem-solving rather than blame.

Receiving feedback with empathy is also critical. Receiving feedback with empathy means listening openly, assuming positive intent, and considering the perspective of the person offering it. Empathy helps us stay grounded and curious, even when feedback is hard to hear.

#### **Blind Spot Awareness**

Blind spots are aspects of ourselves that others can see but we cannot. They might include habits, communication styles, or emotional triggers that affect how we’re perceived. Because we are unaware of them, blind spots can hinder growth and damage relationships without us realizing it.

Feedback is one of the few tools that can illuminate blind spots. However, receiving feedback about a blind spot can feel uncomfortable or even threatening. That’s why it’s essential to approach feedback with curiosity rather than defensiveness. Asking clarifying questions like, “Can you give me an example?” or “How did that come across?” can help unpack the feedback and make it actionable.

For those giving feedback, it’s important to be compassionate and specific. Frame your feedback in ways that invite reflection. For example, instead of saying, “You’re not a good listener,” try, “I noticed during meetings you often speak before others finish their thoughts. Have you noticed that, too?”

#### **Learned Helplessness and Feedback Fatigue**

Learned helplessness occurs when someone repeatedly experiences failure or negative outcomes despite their efforts, leading them to believe they have no control over the situation. In the context of feedback, this can manifest as disengagement or apathy.

To counteract learned helplessness, feedback must be empowering. It should highlight strengths as well as areas for improvement, and it should be paired with support and resources for growth. For example, instead of saying, “You need to be more organized,” try, “I’ve seen how effective you are when you have a clear plan. Let’s work together to build a system that supports planning and organization.”

Receiving feedback with a mindset of growth rather than judgment is also key. Recognizing that feedback is not a verdict on your worth but a tool for development can help reframe even difficult conversations as opportunities.

#### **Creating a Feedback-Rich Culture**

To foster a healthy feedback culture, organizations and individuals must normalize feedback as a regular, two-way conversation. Leaders should model vulnerability by asking for feedback themselves and showing how they act on it. Teams should be encouraged to give feedback across hierarchies, not just top-down.

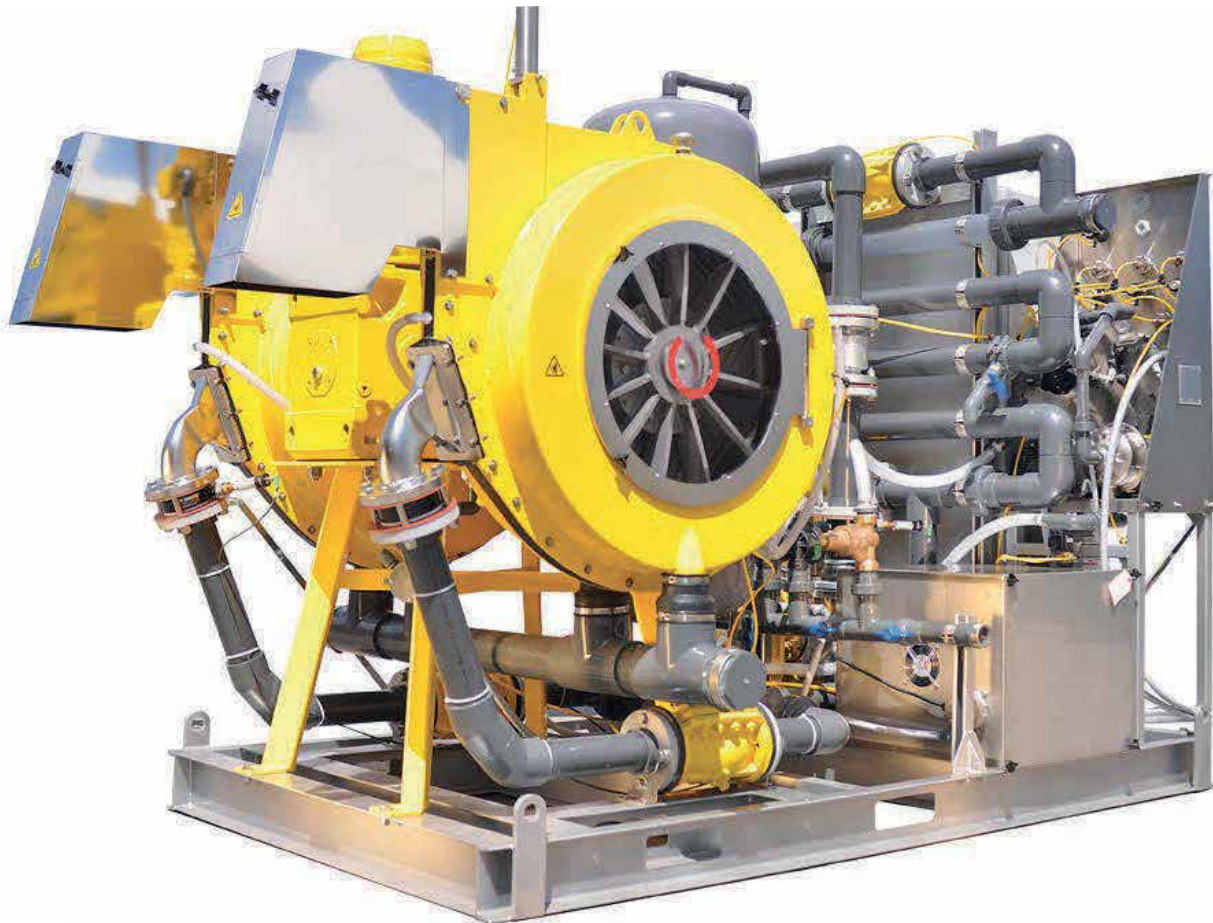
Ultimately, feedback is not just about performance. It’s about connection, learning, and trust. By becoming more aware of our blind spots and resisting the desire for helplessness, we can turn feedback into a powerful force for transformation. [DTI](#)



**PRIME**  
SOLUTION

**DEWATERING PERFORMANCE SIMPLIFIED**

## THE PRIME ROTARY FAN PRESS FAMILY



### **HIGH PERFORMANCE, COST EFFECTIVE ROTARY FAN PRESSES**

Prime Solution designs, manufactures and services dewatering equipment. Our technology is designed and built in Michigan, in the heart of the USA.

**ROTARY FAN PRESS • ROTARY FAN PRESS 2.0 • ROTARY FAN SCREW PRESS**  
**SERVING INDUSTRIES WORLD WIDE**

Proudly represented by:



**Davidson Sales & Engineering**

West Valley City, Utah | p. 801-823-6006 | e. info@dseslc.com | [www.dseslc.com](http://www.dseslc.com)

# COMMITTEE KICKOFF TRAINING

**W**EAU started planning for 2025-2026 with a committee kickoff meeting held at Topgolf followed by an afternoon of golf and fun! After some introductions and making of new friends, our WEAU board members shared insights regarding our finances, how WEF supports WEAU and our membership, and an overview of the WEAU organizational structure and committees.

Next, we had an insightful panel discussion on how to run a top-tier committee and event, featuring three WEAU Committee Chairs, ranging from Digital Water to Engineering Symposium to the PWO Committee. Then, our fearless leader, President Steve Myers, shared his vision for the new year and invited members to share ideas on how to keep our current momentum and build upon it further. Board members, committee chairs, and committee members shared input on how we can improve our support for new members, community opportunities for all, board and executive transparency, collaboration, and increased operator engagement. We wrapped up the meeting by heading outside to continue networking, enjoy some food, and hit some golf balls!

Lastly, a message from Steve:

“A special shout-out to our speakers and fellow facilitators for sharing your insights, time, and energy at the training. Your leadership set the tone for what promises to be an exciting year of growth and collaboration. Each of you brought something meaningful to the table – whether it was a new idea, a fresh connection, or your thoughtful participation in the voting exercise. That collective input helps guide WEAU leadership in directions that truly benefit our entire membership.”

If you want to get more involved with WEAU, check out our website and email one of our committee chairs by clicking here: [https://weau.org/form.php?form\\_id=13](https://weau.org/form.php?form_id=13). **DR**





# WASTEWATER MICRO

**A**ny fans of *Where's Waldo* out there? If so, you might enjoy doing the wastewater micro. There is a certain fun that can be found in identifying the creatures of your plant. The most popular organisms to look at seem to be the higher life forms with water bears being at the top of the list. Of course, it's de rigueur to find a water bear on Wednesdays to make it a true "Water Bear Wednesday"... or is that "Tardigrade Tuesday"?

Another common higher life form is the rotifer. Those gals, with their pinchers up front, can be slightly menacing compared to the cuddly looking water bear. Another not so cute creature is the bristle worm. These guys can look huge compared to the other creatures on the micro. The nematode is slightly smaller and looks rather plain in comparison. These plain creatures are indicative of a slightly older mixed liquor.

Stalked ciliates are also a common slide sight. Some are solitary, others like to hang out in a crowd. Some very large clusters can be found to accommodate the more social stalks. They look like a huge bouquet of flowers if you use a little bit of imagination. In low ammonia and low BOD conditions, you might spot a suctoria. These beauties can be identified by the twin radii crowns. A regal presence if you ask me. The flagellates, on the other hand, are often small, fast, and can be identified by the flagella used to help move around. Flagellates may be considered the Olympic sprinters of the protozoa world. Amoebas come in many shapes but

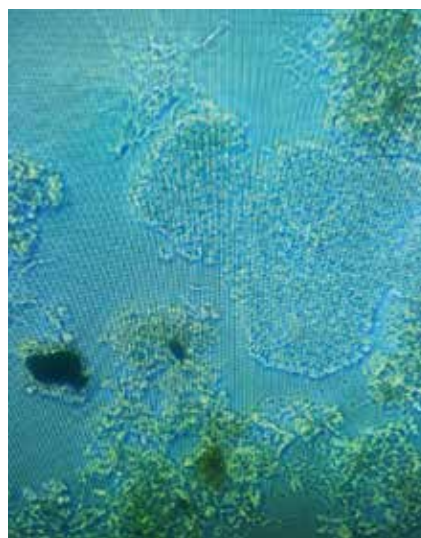


Figure 1. EPS with some nocardia to the left of it.

are always slow. Pineapple amoeba and testate amoeba are easily recognizable, often abundant, and never in a hurry to get anywhere.

While protozoa and metazoan may be the most fun to watch under the microscope, the filaments, flocs, and bacteria can tell an operator a lot about what's going on in their plant. Nocardia and microthrix are two types of filamentous bacteria that can cause foaming. Left unchecked, excessive foaming can bubble up and out of the basin. At high concentrations nocardia can starve out floc forming bacteria. Nocardia have a taste for fats, oil and grease. This predisposition towards fatty foods hits a little too close to home for me.

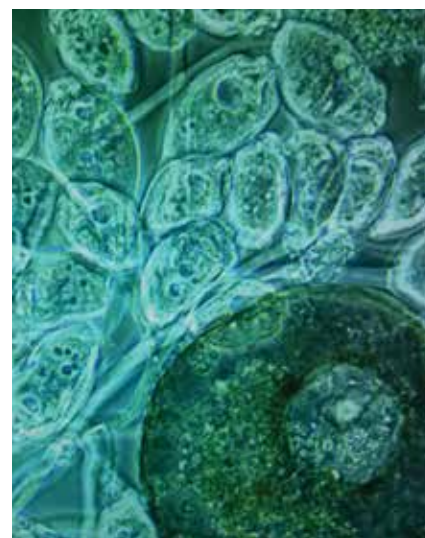


Figure 2. Flash mob of stalked ciliates. And a shout out to what I suspect is a donut amoeba next to it.

EPS (extracellular polymeric substances) can cause severe bulking and is never a welcome visitor. Toxic loads, environmental changes, and soap products can bring this pesky fellow to your door. While some wastewater filaments can be your friend, when they decide to form a flash mob, things can get out of hand. They need to be kept an eye on.

Below you will find pictures of some of my little friends. Like many of our friends they can make our lives easier or make them miserable. Either way, it's best to get acquainted with the little fellows hanging out in your plant. The following pictures were all gathered from Jordan Basin mixed liquor. Thanks to all the creatures who posed for the paparazzi. [DM](#)

Below you will find pictures of some of my little friends. Like many of our friends they can make our lives easier or make them miserable.



Figure 3. Our gal the rotifer.

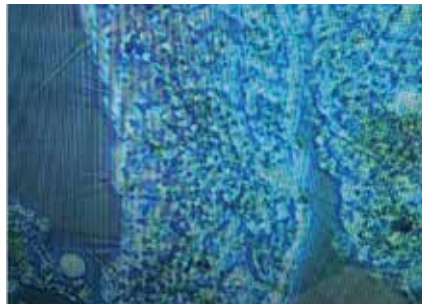


Figure 4. Close up of a (gross) bristle worm.



Figure 5. Pineapple amoeba looking for Sponge Bob.



Figure 7. Queen suctorina.

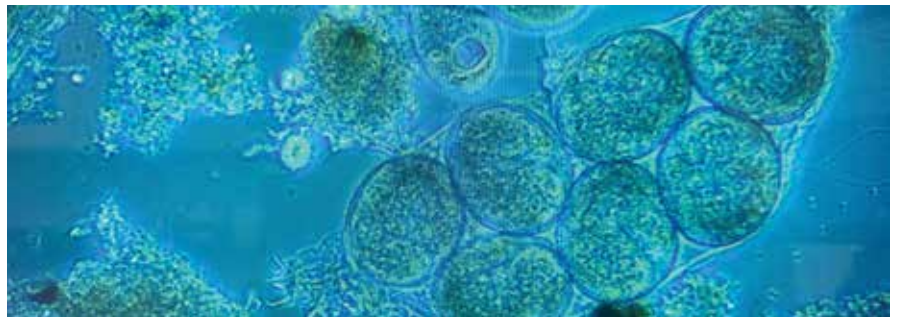


Figure 6. Very pregnant tardigrade. I wonder if her feet hurt?



Figure 8. All tangled up in microthrix. Otherwise known as M parvicella.



# “FLUSH FEST”

## CELEBRATING PROVO'S NEW WATER RECLAMATION FACILITY

Joseph Gandy, Provo Public Works

In a unique and community focused celebration, Provo hosted “Flush Fest” on June 21, 2025, marking the highly anticipated debut of its new \$120 million water reclamation facility. Attended by over 600 residents, city officials, and project partners, the event transformed an infrastructure milestone into a festive, educational community gathering.

Community members enjoyed the wastewater themed interactive booths where they could throw plungers, look through a microscope, and see the difference between toilet paper versus so-called “flushable” wipes. Each booth focused on different parts of the sewer system including, what should and shouldn't go down the drain, the various treatment processes from microorganisms to filtration, as well as the sustainability and environmental benefits of the new plant.

Residents were able to tour the new Water Reclamation Facility and learn about the transformative upgrade, from the original infrastructure dating back to 1956, to the incorporation of cutting-edge Membrane Bioreactor technology used by the world's most advanced treatment plants.

Mayor Michelle Kaufusi, selfdubbed the “Sewer Mayor” highlighted the importance of the new plant. “When I took office, our aging water reclamation facility was approaching failure – a challenge we had to tackle for Provo's future,” said Mayor

Michelle Kaufusi. “Its completion is a vital success that will serve our community and improve Utah Lake for generations to come.”

As part of the ceremony opening the new plant, City leaders used oversized scissors and a roll of toilet paper to symbolize the plant's operation coming online, while staying true to the purpose of the facility and community importance.

The multi-year project broke ground in September 2020, to replace the aging systems that had far exceeded industry standards useful life and were approaching federal compliance issues. By starting the project early, the city avoided substantial inflation costs and stayed within budget through careful planning and additional funding applications.

Construction involved demolishing outdated structures, extensive ground improvements, and constructing new facilities including a Power Distribution Building and Fine Screen Pump Station. While celebrating this milestone, city officials noted that upcoming phases will replace the “solids” portion of the plant as part of this multi-generational infrastructure investment.

“Flush Fest” stood out for transforming a critical infrastructure launch into both an educational and entertaining experience, bridging public utility with public engagement. As the facility enters its operational phase, it represents a major step forward in Provo's environmental stewardship. [Dix](#)





**Fats  
Oils  
Grease**

**What is FOG?**  
FOG stands for fats, oils, and grease.



**Where does FOG come from?**  
FOG comes from restaurants and homes.  
FOG can be found in most everything that includes animal fats, and vegetable oils.



**Why care?**  
FOG causes sewer backups by collecting and building on the inner walls of a sewer pipe, reducing the size of the pipes.



**What can you do?**

- Food and grease should be scraped into the trash to avoid washing it down the sink.
- Never pour chemicals, cleaning products, gasoline, oil, paint, or other substances down the drain.
- Do not put anything down the drain/toilet other than toilet paper, pee, and poo.




# A New Approach to Strengthening Wastewater Laboratories in Utah: Coming Soon

By: The Lab Committee

In the coming months, the Lab Committee will launch a special project designed to encourage and facilitate networking and collaboration amongst Utah Wastewater Laboratories, Lab Directors, and Quality Assurance Officers (QAOs). This project will create semiannual opportunities for Lab Directors and QAOs to connect, share knowledge, and support one another through networking lunches, facility tours, and hands-on training events. These events are not limited exclusively to Lab Directors and QAOs, we encourage Directors to invite one of their Lab Tech's along for a valuable learning experience.

Laboratories across the state face similar challenges – from regulatory changes and instrumentation issues to staffing, training, and quality assurance. Rather than face these

“The Lab Committee will launch a special project designed to encourage and facilitate networking and collaboration.

hurdles in isolation, this new program is designed to build a stronger, more connected community of lab directors who can turn to one another for guidance, troubleshooting, and professional support.

These events will give participants an opportunity to learn from each other, experts, and facility staff. Whether you're a new lab director looking for mentorship or a seasoned professional eager to exchange best practices, this program will offer a platform for both learning and leadership.

Ultimately, our vision is to foster a close-knit, collaborative network of laboratory professionals that not only strengthens individual lab operations but also supports continued excellence across Utah's wastewater laboratories. By working together and sharing expertise, we can build on the strong foundation already in place and elevate our collective impact.

More details about the first event will be announced soon – stay tuned, and we look forward to seeing you there! [D&E](#)



## PROCESS AND ROTATING EQUIPMENT SPECIALISTS!

*Proudly representing the following manufacturers!*



[WWW.DSESLC.COM](http://WWW.DSESLC.COM) . 2441 South 3850 West . West Valley City, Utah . 84120 . 801-977-9200

# **GOBLE SAMPSON**

Providing Water and Wastewater Solutions Since 1957  
[www.goblesampson.com](http://www.goblesampson.com) 801-268-8790



Water Environment Association of Utah



## Smart Tank Solutions COMPETITION



Compete for  
**\$1000**

At the WEAU  
Mid-Year  
Conference

SCAN ME FOR MORE INFORMATION



The PWOs are excited to announce the first-ever WEAU Smart Tank Solutions Competition. Share your innovative solutions to real-world wastewater challenges for a chance to win up to \$1000, \$500, or \$250 in scholarships!

**DEADLINE TO SUBMIT:** October 15, 2025  
**COMPETITION:** November 18, 2025  
**LOCATION:** Utah Cultural Center, West Valley, UT

For full details and the submission form, visit [weau.org](http://weau.org).  
**QUESTIONS?** Contact Taylor Byrum at [pwo@weau.org](mailto:pwo@weau.org) or Cole Tubbs at [pwoelect@weau.org](mailto:pwoelect@weau.org) for more information.

Our concern for the environment is more than just talk

This publication is printed on Forest Stewardship Council® (FSC®) certified paper with vegetable oil-based inks. Please do your part for the environment by reusing and recycling.



**VAL KOTTER**  
OWNER  
PHONE  
(435) 734-9598  
MOBILE  
(435) 720-0237  
FAX  
(435) 734-9870

- Sewer Cleaning (6"-24") • Cleaning (24" & Up) No Bypass Pumping Required
- Specialized Equipment • CCTV Inspection (NASSCO PACP Trained)
- Lateral Launch CCTV Equipment • Dyna Liner (PVC Alloy Pipe Liner, 4"-36")

1035 WEST FOREST, BRIGHAM CITY, UTAH 84302  
Website: [www.valkotterandsons.com](http://www.valkotterandsons.com) • Email: [pearl@valkotterandsons.com](mailto:pearl@valkotterandsons.com)



# DIGESTED news

To reach Utah's water industry professionals through the *Digested News* magazine and its targeted readership, contact Kris at your earliest convenience to discuss your company's promotional plans.

## **Kris Fillion**

Marketing Manager | 866-985-9798  
[kfillion@kelman.ca](mailto:kfillion@kelman.ca)





# Let's chart your course to compliance

Navigate the BABA Act with confidence

The Build America, Buy America (BABA) Act, part of the Infrastructure Investment and Jobs Act (IIJA), places more stringent domestic requirements on **infrastructure projects that receive federal assistance**—big and small. BABA applies to iron and steel products, manufactured products, and construction materials. **But what does that mean for your project?**

At Xylem, we are deeply knowledgeable about the BABA Act. We have a dedicated team that is equipped to guide wastewater utilities toward compliance. We're here to help you understand the impact to your operations—and map out a clear path forward.

Get started at  
[xylem.com/build-america-buy-america](https://xylem.com/build-america-buy-america)



Xylem Utah  
2464 W 1500 S  
Salt Lake City, UT 84104  
M: 208 908 3296



# Thank you,

## WEAU PLATINUM SPONSORS





# Performance Efficiency A Partner You Can Count On.

When every dollar and minute counts, the HST™ turbocompressor delivers results. Designed for exceptional energy efficiency and virtually maintenance-free operation, the HST enables municipalities to significantly reduce operating costs without sacrificing performance.

With its magnetic bearing technology and oil-free design, the HST ensures fewer service interruptions, reduced lifecycle costs, and consistent performance you can rely on.

With the HST, your team can concentrate on operations instead of maintenance.

Learn more about Sulzer's HST  
[go.sulzer.com/trusted-hst](http://go.sulzer.com/trusted-hst)



Represented locally by: Davison Sales & Engineering  
Phone: 801-977-9200  
Website: [www.dseslc.com](http://www.dseslc.com)  
Email: [info@dseslc.com](mailto:info@dseslc.com)

**USE PAPER RESPONSIBLY**



# **REDUCE REUSE RECYCLE**

**Today's forest industry is working hard to become one of the greenest industries on earth.**

Paper is an essential part of human civilization. While we all use and depend upon electronic communications, it is easy to ignore that it comes at an environmental cost. Worldwide spam email traffic creates greenhouse gases equivalent to burning two billion gallons of gasoline yearly, with numbers rising. More than \$55 billion in toxic e-waste material is thrown away every year in the US alone, with a recycling rate of only 20% compared to 64.7% for paper.

No industry is perfect. But the paper industry has made, and continues to make, huge investments in environmental responsibility. Specifying and buying paper from certified sources ensures the continuation and growth of carbon absorbing forests. Using paper with appropriate amounts of recycled fiber helps preserve forests, conserve energy, and maximize fiber usage through paper lifecycles.



## Advertiser Product & Service Center

*Digested News* is made possible by the companies below who convey their important messages on our pages. We thank them for their support of WEAU and its publication and encourage you to contact them when making your purchasing decisions. To make it easier to contact these companies, we have included the page number of their advertisement, their phone number, and, where applicable, their website.

Company	Page Number	Telephone	Website
(AE2S) Advanced Engineering and Environmental Services, Inc.	22	801-331-8489	www.ae2s.com
Ambiente H2O	12	801-532-4812	www.ambienteh2o.com
Aqua-Aerobic Systems, Inc.	5	815-654-2501	www.aquanereda.com
Archer Western	3	801-534-4440	www.walshgroup.com
Bowen Collins & Associates, Inc.	17	801-495-2224	www.bowencollins.com
Brown and Caldwell	6	801-316-9800	www.browncaldwell.com
Carollo Engineers	20	800-523-5826	www.carollo.com
Cogent, Inc.	48	208-751-5624	www.cogentcompanies.com
Davidson Sales & Engineering	5, 23, 31, 38, 44	801-977-9200	www.dseslc.com
Forsgren Associates, Inc.	18	801-364-4785	www.forsgren.com
Goble Sampson Associates	39	801-268-8790	www.goblesampson.com
Hidrostal	23	630-948-3355	www.hidrostalpumps.com
Integrity Inspection Solutions, Inc.	15, 19	208-442-4470	www.iispipeline.com
JWC Environmental	11	877-873-4392	www.jwce.com
Lakeside Equipment Corporation	4, 10	630-837-5640	www.lakeside-equipment.com
MGC Contractors	13	801-739-6948	www.mgccontractors.com
Mountainland Supply Company	2	801-224-6050	www.mountainlandsupply.com
Nickerson Company	20	801-973-8888	www.nicopumps.com
Prime Solutions	31	269-694-6666	www.psirotary.com
Smith & Loveless Inc.	16	800-898-9122	www.smithandloveless.com
Sulzer Pump Solutions Inc.	28	801-977-9200	www.sulzer.com
Sunrise Engineering Inc.	8	801-523-0100	www.sunrise-eng.com
Twin "D" Environmental Services	21	801-771-3038	www.twind.net
Val Kotter & Sons	41	435-734-9598	www.valkotterandsons.com
Waterford Systems	47	801-463-9900	www.waterfordsystems.com
Xylem Water Solutions	42	385-347-3105	www.xylem.com

Flow • Level • Pressure • Aeration • Screens • Grinders  
 Blowers • Analyzers • Dewatering • SBR • UV Disinfection  
 Grit Removal & Processing • Package Treatment Plants  
 Valves & Gates • Ultra Filtration & RO • Chemical Feed  
 Lift Stations • Vacuum Sewer Systems • Fe, Mn, As Removal



PSI WATER TECHNOLOGIES  
 UGSI CHEMICAL FEED  
 PAX WATER TECHNOLOGIES

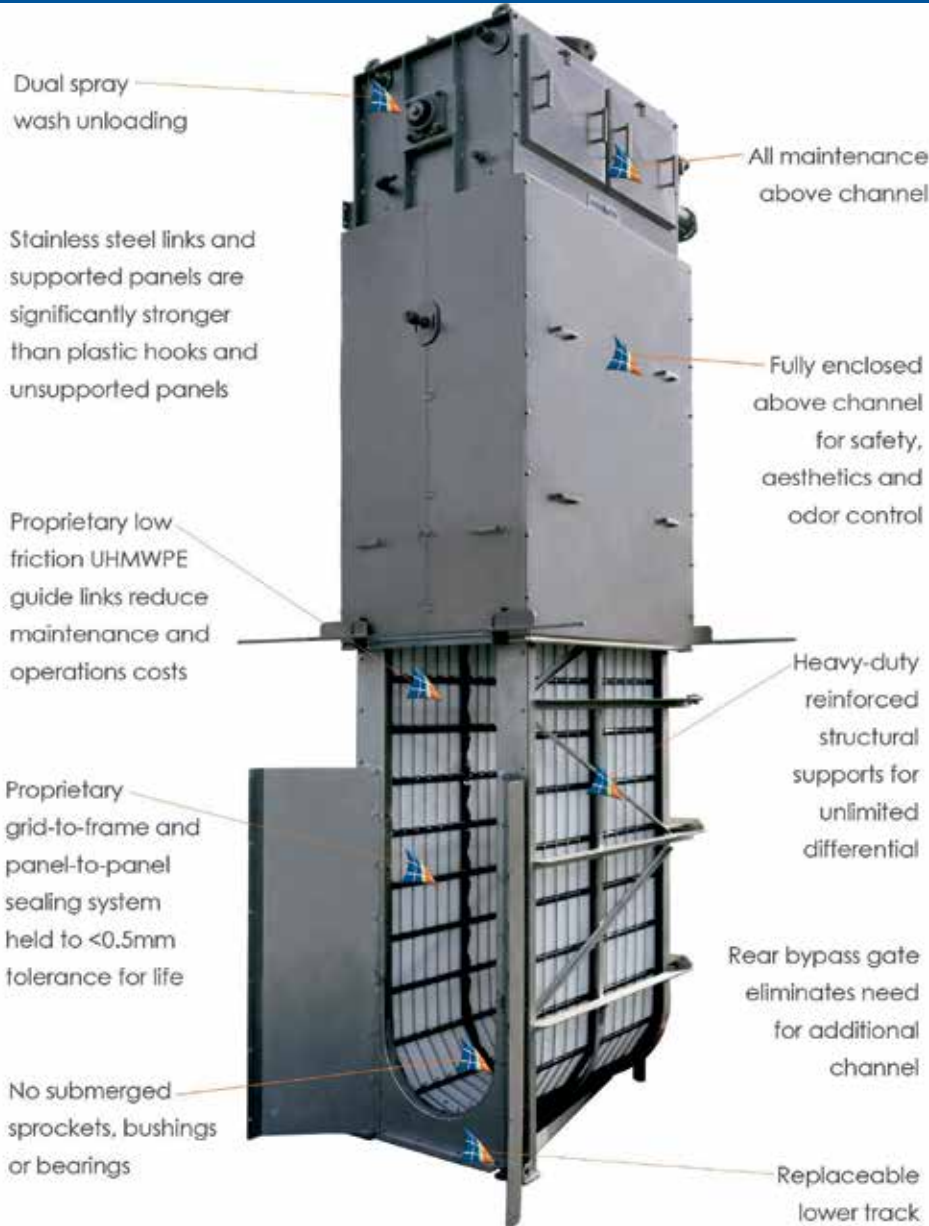


Smith & Loveless Inc.



waterfordsystems.com • 801 463 9900  
 2850 East 3300 South, Ste. 201 • Salt Lake City, UT 84109

# Great White Center/Dual Flow Screen



## At-a-glance

### Models

- Center Flow (center entrance/side exit)
- Dual Flow (side entrance/rear exit)

### Grid Opening Range

- 0.5-25mm

### Flow Capacity

- 0.1mgd (5 L/s) to 125+mgd (5,500+ L/s)

### Grid Types

- Stainless steel laced link
- Stainless steel wire mesh
- Stainless steel perforated panel
- UHMWPE perforated panel

## Patented Drive Features

- Grid does not contact drive or unloading mechanism
- Direct drive uses no chains or sprockets
- Fully supports grid for negligible wear
- Fractional hp requirements



## Optional Equipment

- Specialty stainless steel construction
- Cold weather/freeze protection
- Basic to sophisticated automation controls
- Sectional construction for restricted area assembly
- Integrated screenings handling equipment
- Electric, hydraulic or explosion-proof drives

